

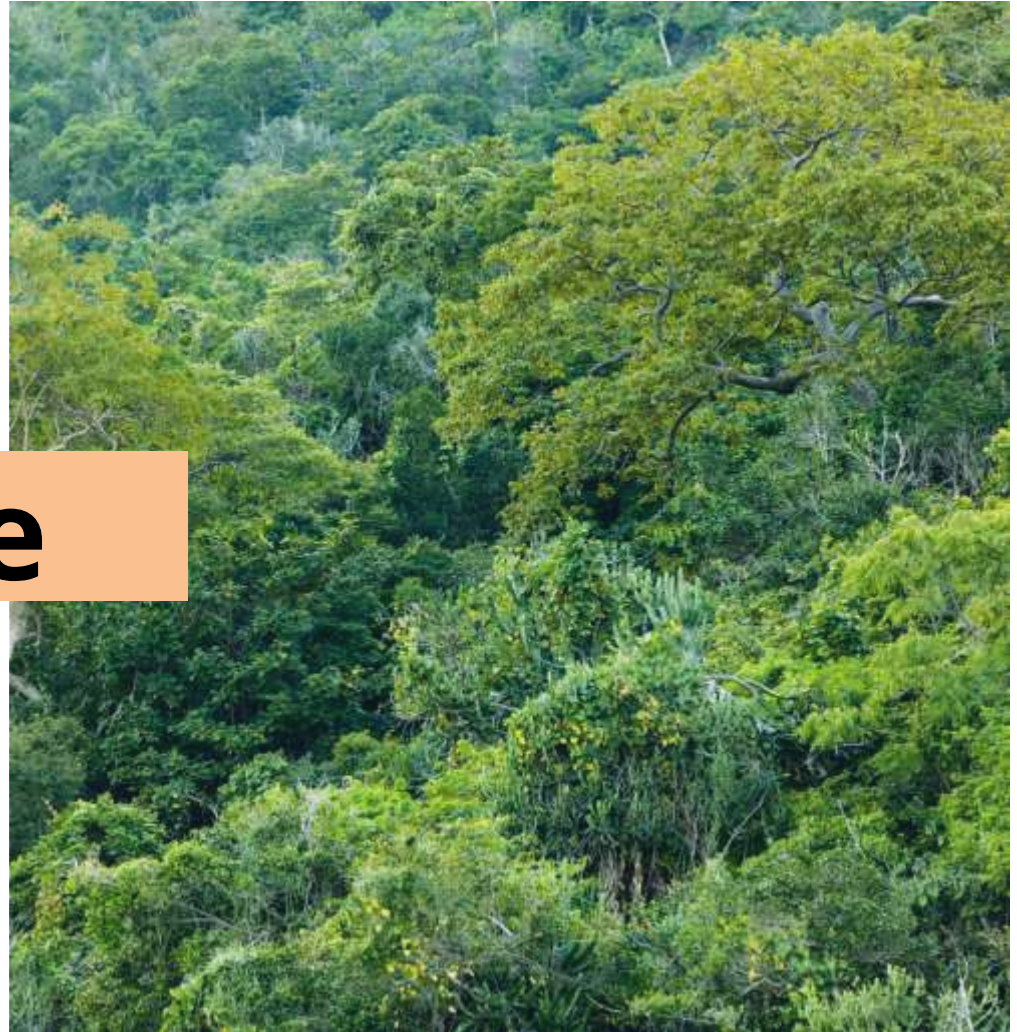
Forest Carbon Partnership Facility

Republic of Togo

R-Package

PC 30 Meeting

**Manuela Ravina da Silva,
Mirko Serkovic
Task Team Leaders**



STATE OF FORESTS

**ONE OF THE HIGHEST PROPORTION OF FOREST LOSS
IN THE WORLD IN RELATION TO ITS AREA**



Légende

- Forêts denses
- Forêts riveraines
- Forêts claires
- Savanes arbustives arborées
- Savanes hebeurses
- Surfaces en culture (Agricole)
- Plantations
- Agglomérations (Routes, habitations)
- Eaux/Cours d'eau
- Savanes boisées/reclus forestiers
- Sol Nu/carrières
- Zones marécageuses
- Zones sableuses / zones côtières
- Limite des régions
- Chefs lieux des préfectures du Togo

Main drivers

Agriculture
(accountable
over 50 %)

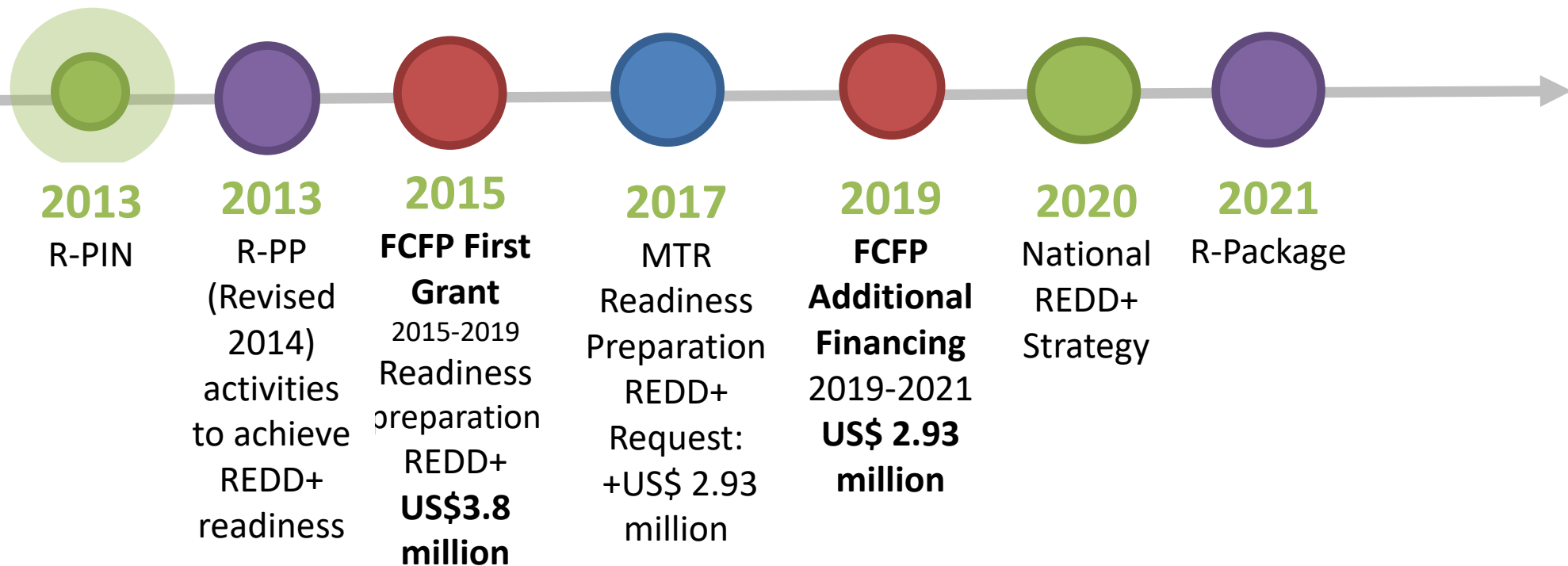
Fuelwood and Timber
(40%)

Urbanization (8%).

-10 % of forest cover in 12 years (2005-2017)

A total of 1.21 million hectares of forests in 2017

REDD+ READINESS



- GIZ ProREDD+ (2014-2016)
- World Bank IDLMP (2012-2017)

REDD+ READINESS PREPARATION PROJECT (FCPF)

Project Development Objective:

to reinforce the Republic of Togo's capacity to design a socially and environmentally sound national strategy to reduce emissions from deforestation and forest degradation.

COMPONENT	1 ST Grant (‘000 US\$)	Additional Financing (‘000 US\$)	Total (‘000 US\$)
1. Support to the national readiness management arrangements	1,7000	651	2,351
2. Support to REDD+ Strategy Preparation	2,100	331	2,431
3. Support to the establishment of a Forest Reference Emissions Level – FREL	0	1,618	1,618
4. Support to the development of monitoring systems for forests and safeguards.	0	330	330
Total	3,800	2,930	6,730
Disbursement	97% Closed in 2019	90% Closing Dec 30, 2021	

Component 1. National readiness management arrangements

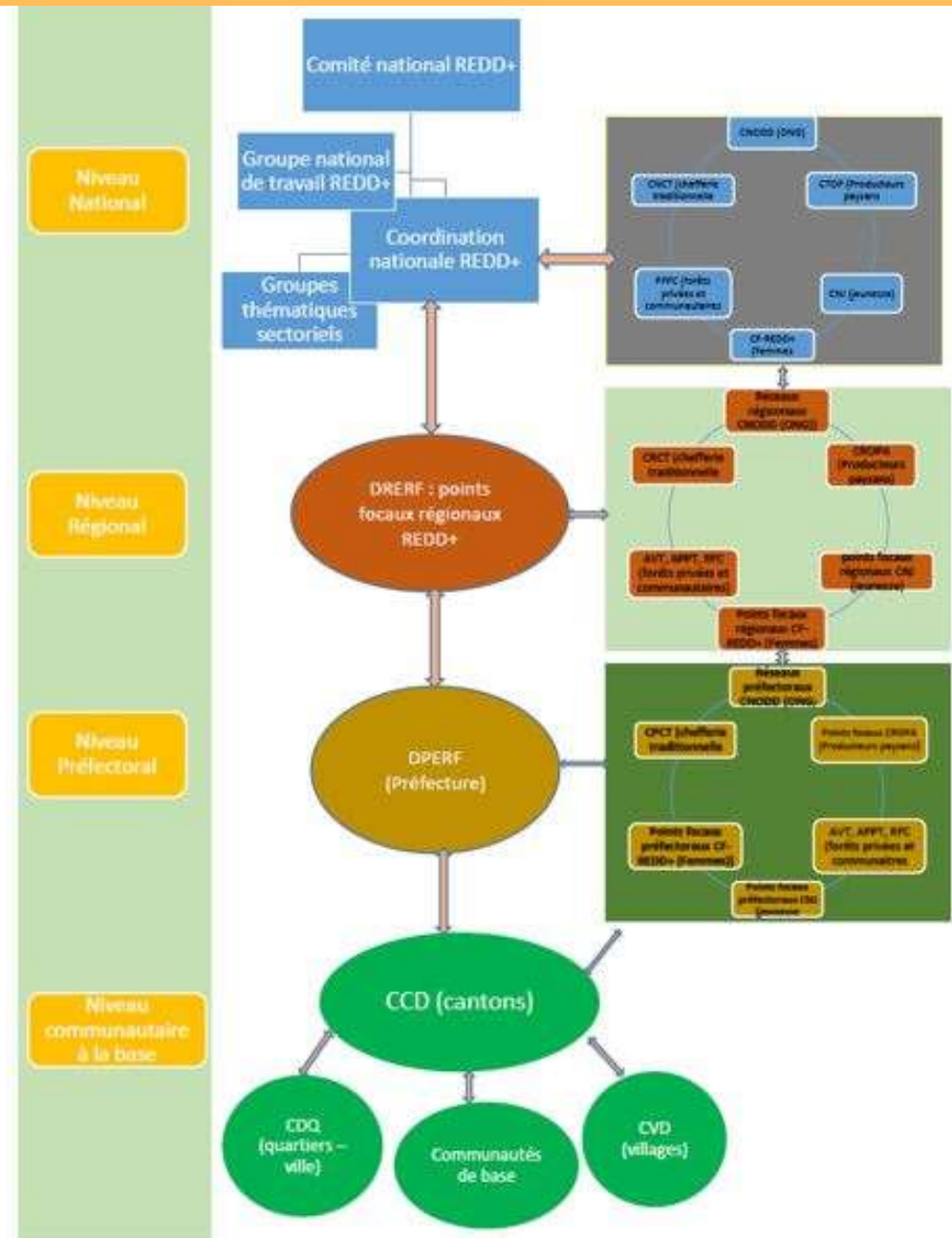
Institutional arrangements for REDD+

Presidential Decree and a Ministerial Decision and operational.

Civil Society Platforms strengthened:

- National Council of Civil Society Organizations for Sustainable Development (CNOOD)
- National Youth Council (CNJ)
- Togo REDD+ Women's Consortium (CF-REDD+ Togo)
- Handicapped people's organisations (FETAPH, ONATEPH).
- Platform for Private and Community Forest owners
- etc.

FGRM: ensuring that stakeholders are properly informed about its function.



Component 2. National REDD+ Strategy

- Nine analytical studies - Drivers of deforestation & forest degradation; NTFP value chains; historical analysis of forest cover; legal and regulatory framework of forests; socio-economic analysis of forestry sector, among others.
- **Finalization and approval of National REDD+ Strategy and its action plan** Adopted by the Council of Ministers March 2021.
- Strategic Environmental and Social Assessment and its Safeguards instruments validated by the national REDD+ and approved by the World Bank.
- Forest law revised. Legal framework on land tenure to be validated at national level and approved by the World Bank.
- Validation of the legal and institutional options of the carbon governance and benefit-sharing mechanism under REDD+ by the national REDD+ committee.
- Green Climate Fund (GCF) proposals developed in collaboration with the designated national authority of the Green Climate Fund and the World Bank PALCC project .

Component 3. Forest Reference Emissions Level – FREL

- **FREL submitted to UNFCCC in January 2020 for approval** to enable Togo to access future funding from international REDD+ mechanisms.
- Documentation at UNFCCC website, or <https://ogardi.github.io/SNSF-Togo/>
- **Second National Forest Inventory (NFI) completed.** Forest Reference Level report under development.
- Activities covered in Forest Reference Level (FRL) – deforestation, forest degradation and enhancement of forest carbon stocks
- Reference period for FRL: 2003-2018
- **FRL design consistent with IPCC guidelines**



Component 4. National Forest monitoring system and safeguards

- **Development of National Forest Management System:**
Operationalization and capacity building in collaboration with the University of Bern and FAO :
 - NFI - Tier 3 estimates for Emission Factors
 - Satellite Land Monitoring System
 - FRL with MRV – changes forest carbon pools
- Operationalization will depend on REDD+ activities in the coming years, institutional anchoring and commitment of staff.
- **Need of a small team established in MRV REDD+ activities to assure the continuity of the NFMS activities after project closure.**
- **Information System for Safeguards, Governance and Multiple Benefits.**

Challenges

- **Delays/Cancellation of activities during 2020 due to COVID-19 pandemic**

impact on operationalization and disbursement of the project and key activities:

- NFI 2
- Workshop organizations
- South-South learning exchange

- **Fincancing of REDD+ Investments**

the extent to which the continuation of the implementation of the National REDD+ Strategy and its action plan depends on future donors to collaborate with the Government of Togo.

The project has committed a small team to ensure continuation and further search of collaboration with donors.

To organize roundtable with donors

Priorities going forward

- Mobilization of investment financing and commitment implementation of the National REDD+ Strategy and its action plan
- Finalization of the second NFI report
- Continuance of improvement of FREL data through capacity building
- Finalization of REDD+ Registry and the Multiple Benefits and Safeguards Information System (SIS).
- Design and operationalization of a geo-portal and the institutionalization of the NFMS
- Maintain the operationalization of the NFMS, MRV
- Continue to strengthening the dialogue with different Ministries on REDD+ Agenda
- Organization of roundtable of donors for future REDD+ investments
- legal instruments to be adopted: revised Forest Law, the SESA decree, and the Act for the creation of the National REDD+ Registry

R-PACKAGE



- The Togo REDD+ Readiness process demonstrates inclusive stakeholder engagement
- R-package complies with the FCPF readiness assessment process
- World Bank supports Togo's R-Package Self-Assessment

A photograph of a lush green forest with many trees and branches. In the center, there is a large orange rectangular box containing the text "THANK YOU" and "MERCI" in bold black letters.

**THANK YOU
MERCI**