

# MTR Presentation

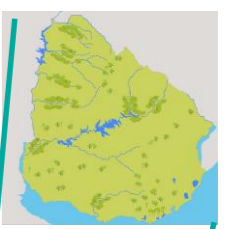
## Uruguay

October 2018  
FCPF PC Washington

# Structure of Presentation

- Context information
  - General
  - Forests
  - Institutional
- REDD+ vision for Uruguay
  - Interlinks with agricultural productive sector
  - Mix financial system
  - Urban areas
  - Co-benefits
- Progress in Readiness
  - Street lights
  - Components
- Next steps

# Context: General



- **Socio-economic**

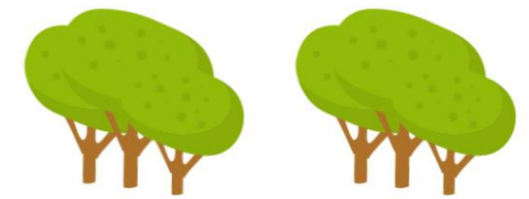
- Total country surface: 17.6 million ha
- Total agriculture surface 16.4 million ha
  
- Population 3.3 million ha
- Urban 90%+
  
- Total GDP 47.000 million U\$D
- Agriculture GDP 8,4%

- **Land use**

- Cattle ranching 78%
- Forestry (plantations) 5%
- Agriculture and others 12%



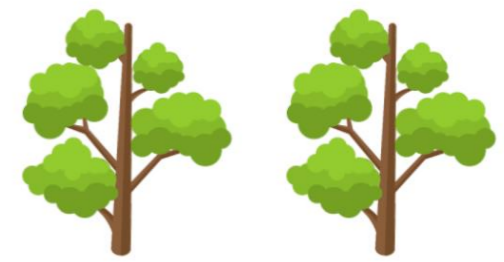
# Context: Forest



- Forest types in Uruguay



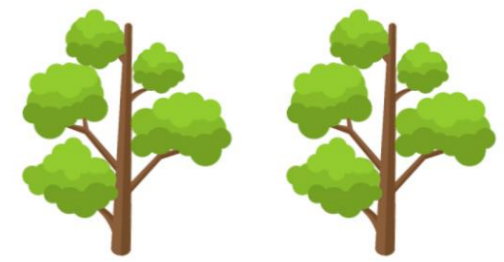
# Context: Forest



- Forest types in Uruguay



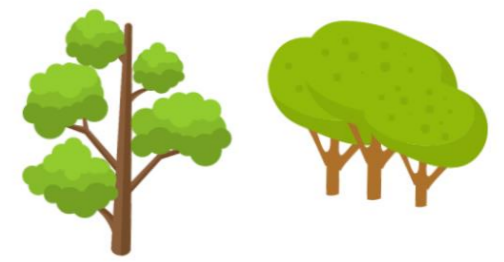
# Context: Forest



- Forest types in Uruguay
- Mostly private lands



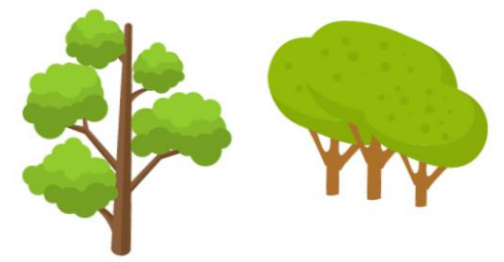
# Context: Forest



- Forest types in Uruguay
- Mostly private lands
- Relationship with forests



# Context: Forest



- Forest types in Uruguay
- Mostly private lands
- Relationship with forests



# Context: Forest



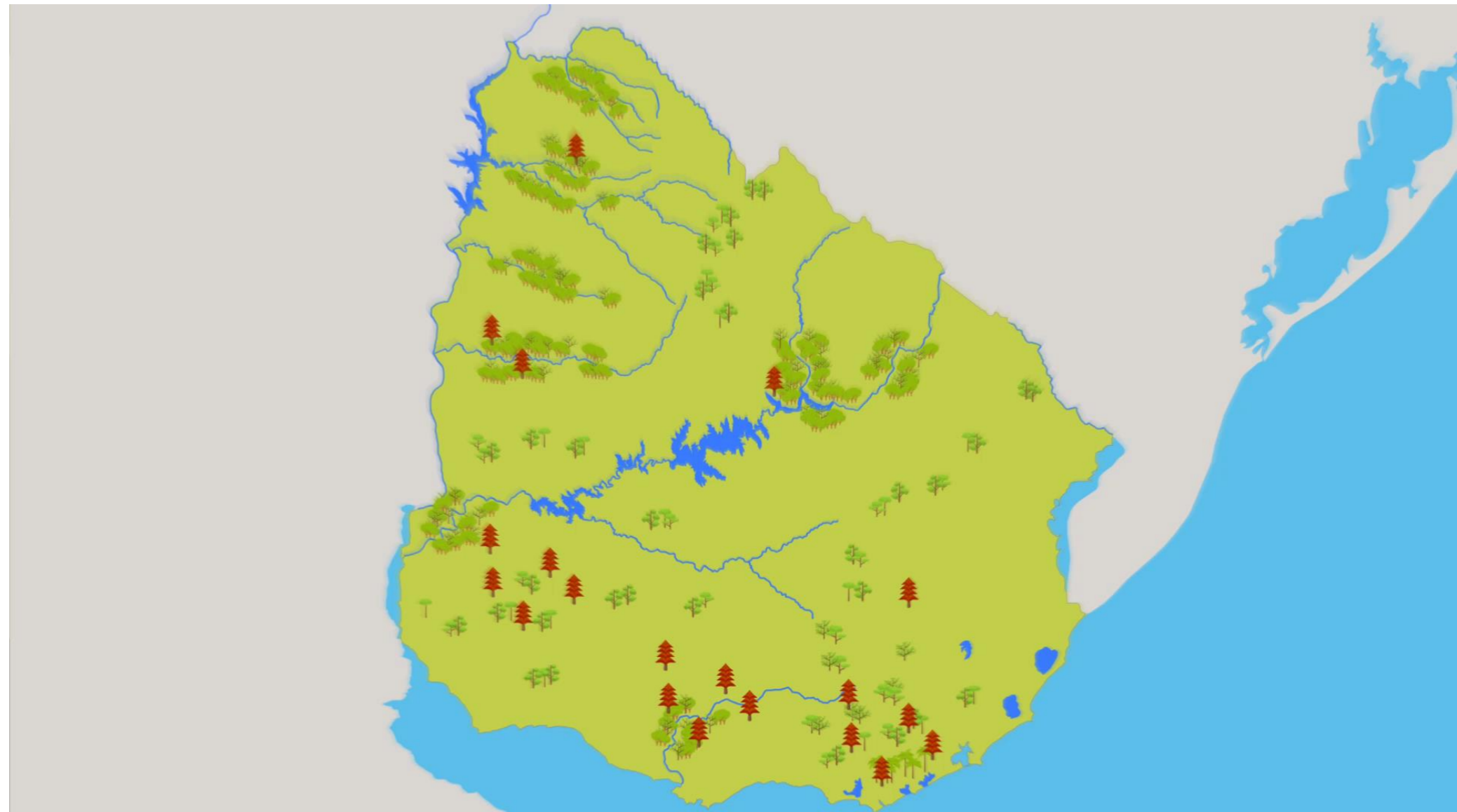
- Forest types in Uruguay
- Mostly private lands
- Relationship with forests
- Invasive Species



# Context: Forest



- Forest types in Uruguay
- Mostly private lands
- Relationship with forests
- Invasive Species



# Context: Institutional

- Forest types in Uruguay
- Mostly private lands
- Relationship with forests
- Invasive Species
- Institutional context

# Context: Institutional and political

- Climate Change National Policy



**Presentation of CCNP with Ministers of Environment, Agriculture and Industry**

# Context: Institutional and political

- Climate Change National Policy
- NDC



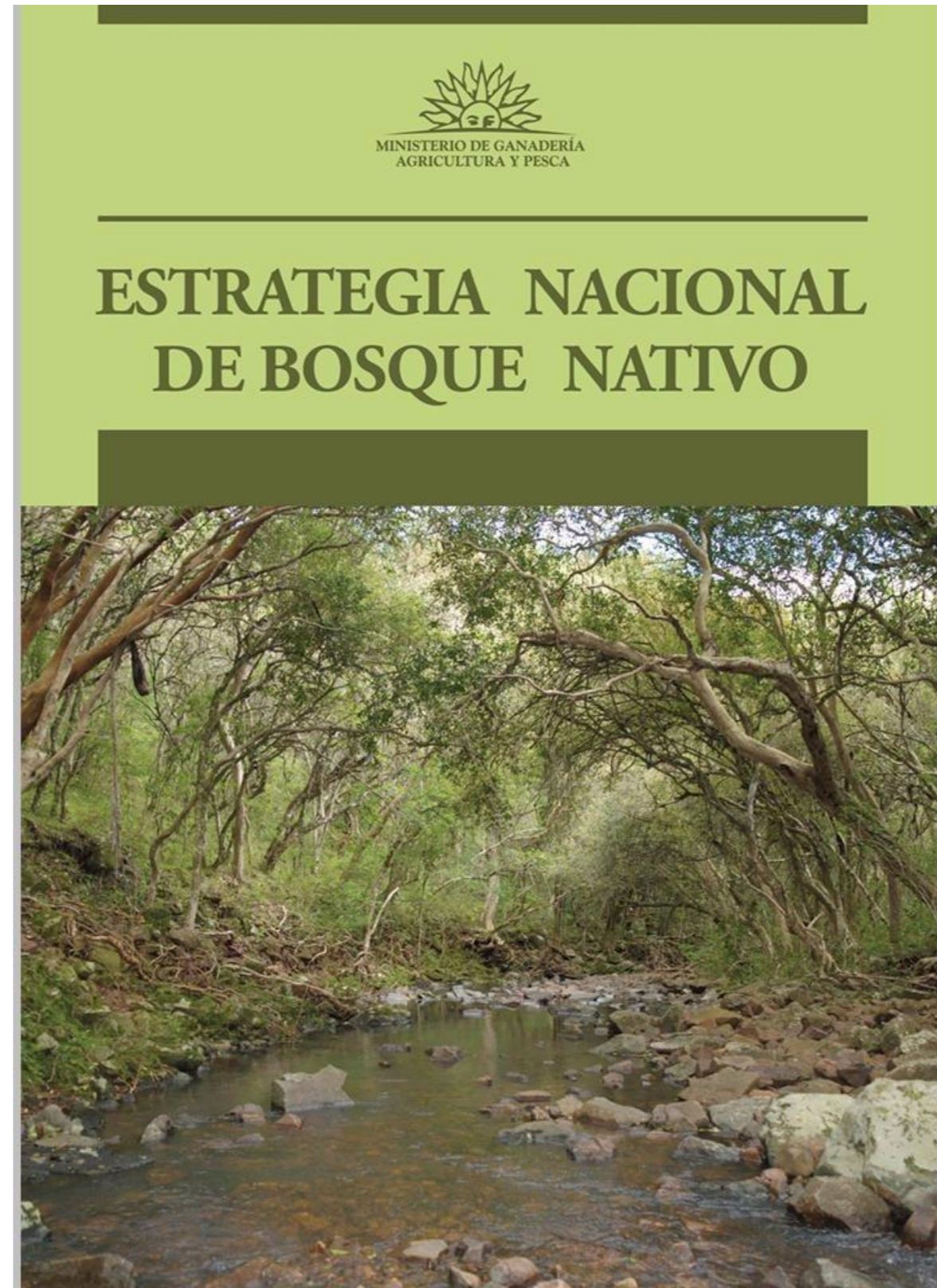
**REPÚBLICA ORIENTAL DEL URUGUAY**  
**Primera Contribución Determinada a nivel Nacional**  
**al Acuerdo de París**

La presente Primera Contribución Determinada a nivel Nacional fue aprobada por Decreto del Poder Ejecutivo Número 310 del 3 de noviembre de 2017, en el marco del Acuerdo de París, que fuera ratificado por la República Oriental del Uruguay el 19 de octubre de 2016.



# Context: Institutional and political

- Climate Change National Policy
- NDC
- National Forest Strategy

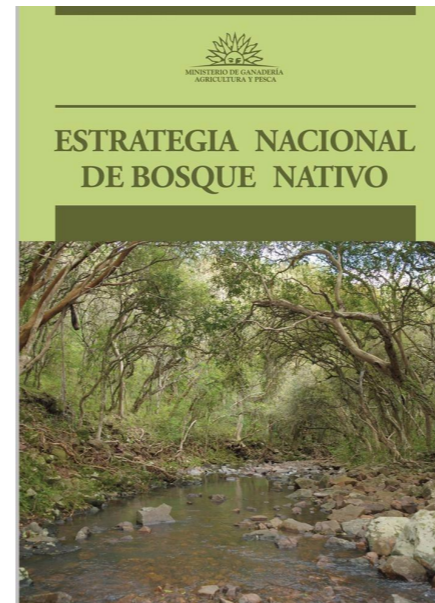
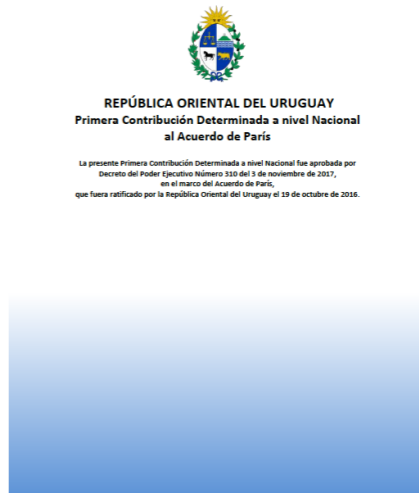


# Context: Institutional and political

- Climate Change National Policy
- NDC
- National Forest Strategy
- Registry



**Ingresar un texto.**



# Vision



- Interlinks with agricultural productive sector
- Co-benefits

# Vision



- Interlinks with agricultural productive sector
- Co-benefits



# Vision



- Interlinks with agricultural productive sector
- Co-benefits
- Urban areas



# Vision



- Interlinks with agricultural productive sector
- Co-benefits
- Urban areas



# Vision



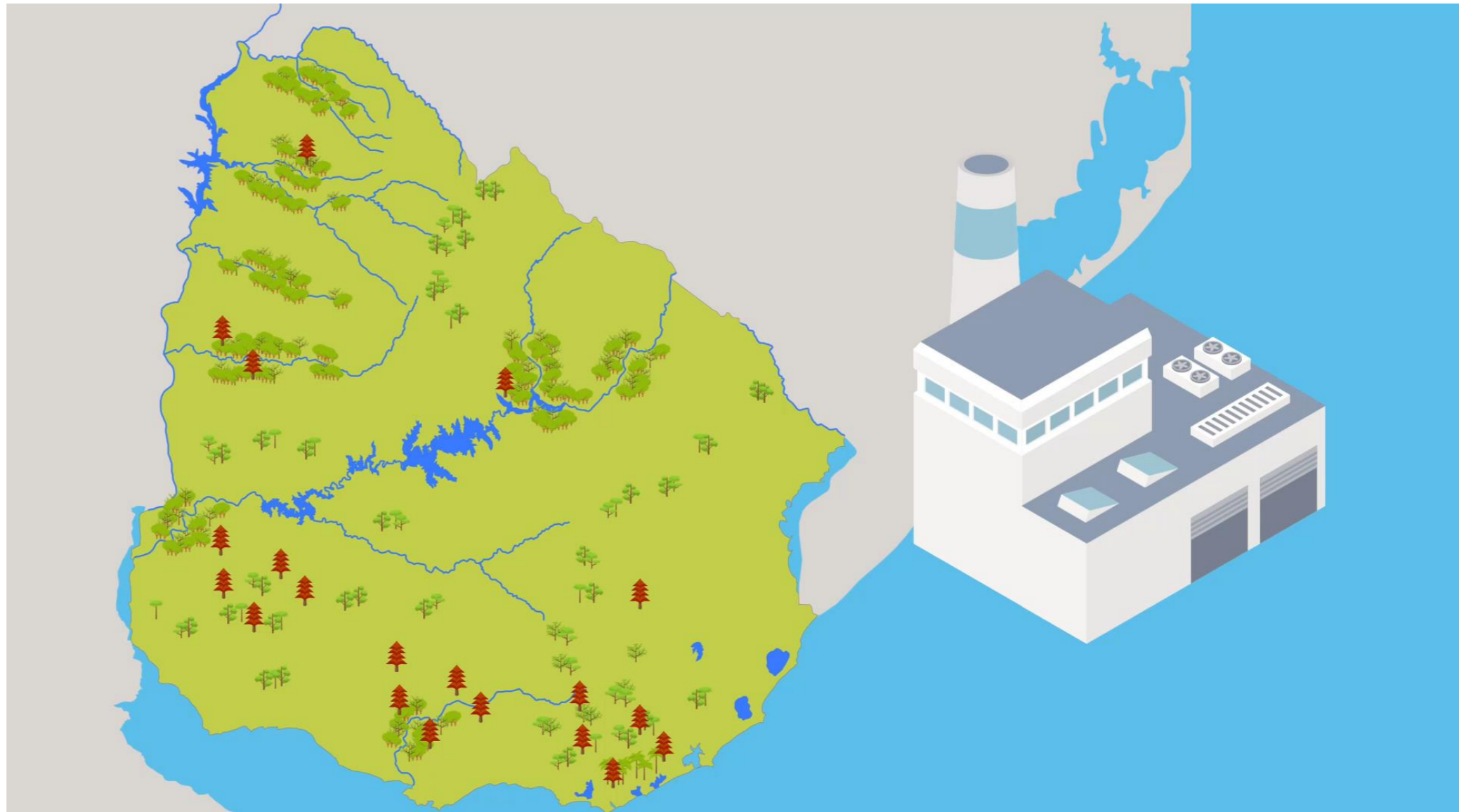
- Interlinks with agricultural productive sector
- Co-benefits
- Urban areas
- Mix financial system



# Vision



- Interlinks with agricultural productive sector
- Co-benefits
- Urban areas
- Mix financial system



# Vision



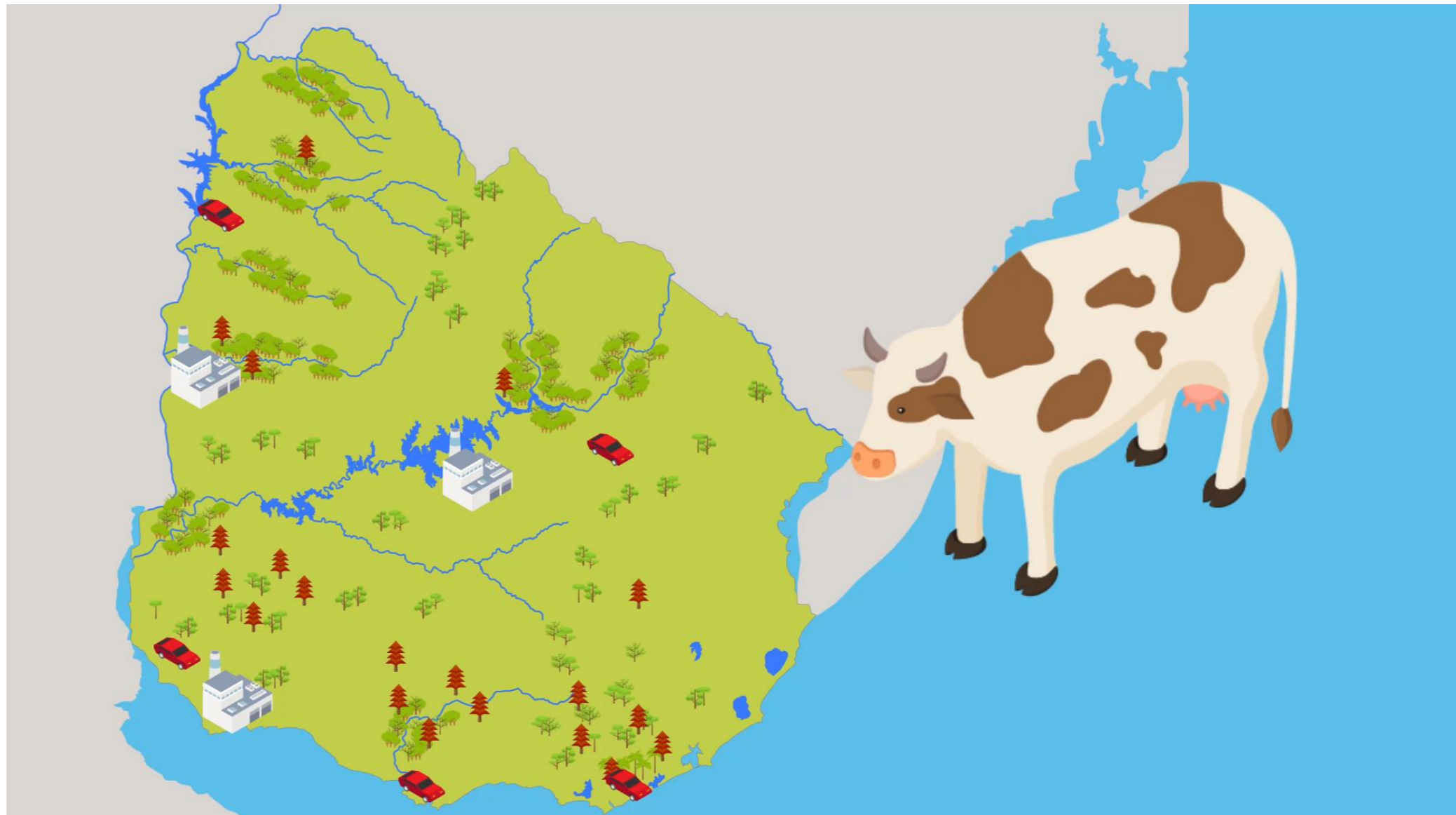
- Interlinks with agricultural productive sector
- Co-benefits
- Urban areas
- Mix financial system



# Vision



- Interlinks with agricultural productive sector
- Co-benefits
- Urban areas
- Mix financial system



# Vision



- Interlinks with agricultural productive sector
- Co-benefits
- Urban areas
- Mix financial system



# Vision



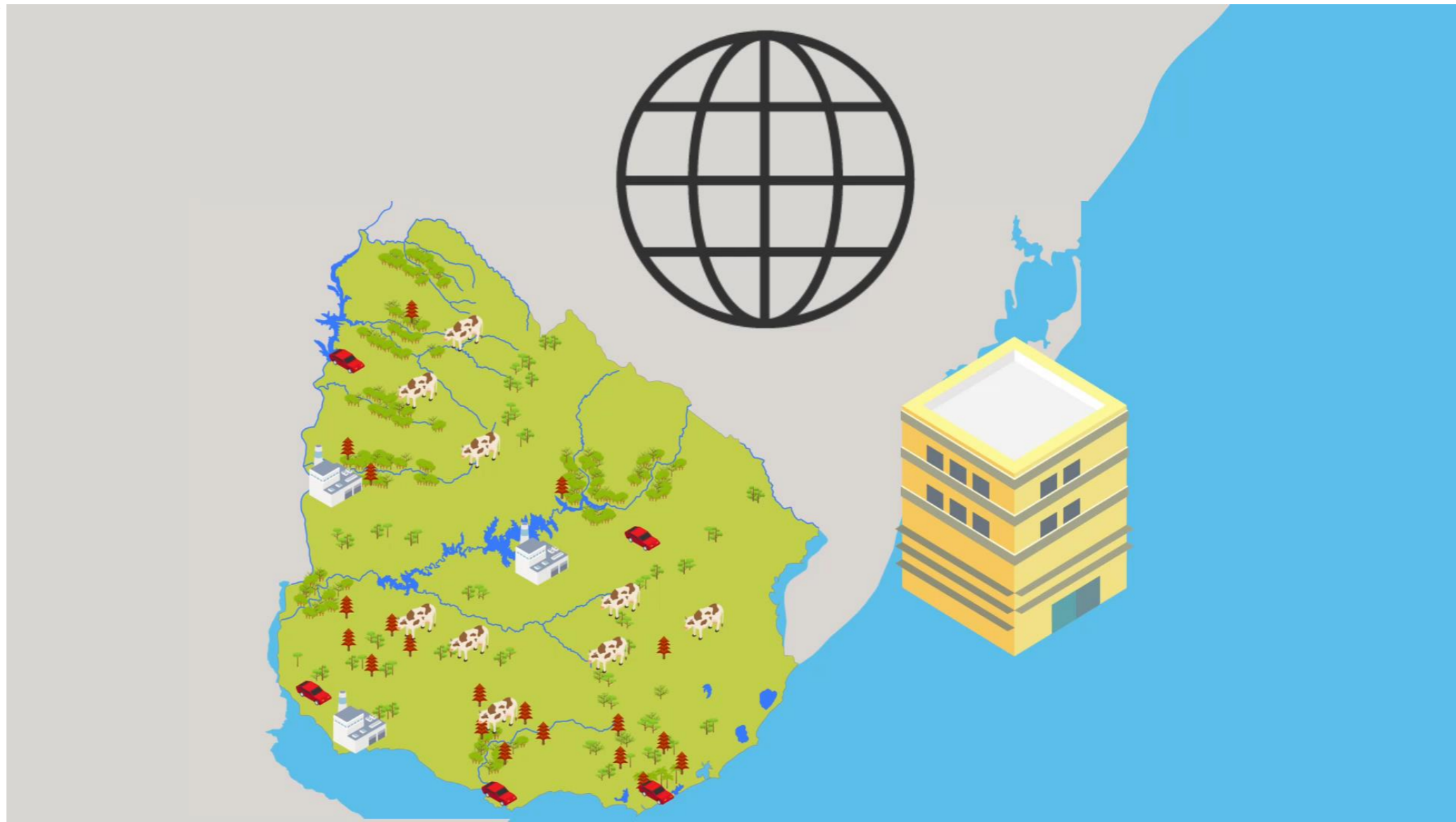
- Interlinks with agricultural productive sector
- Co-benefits
- Urban areas
- Mix financial system



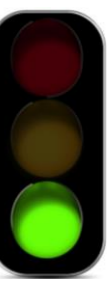
# Vision



- Interlinks with agricultural productive sector
- Co-benefits
- Urban areas
- Mix financial system



# Progress so far: street light explanation

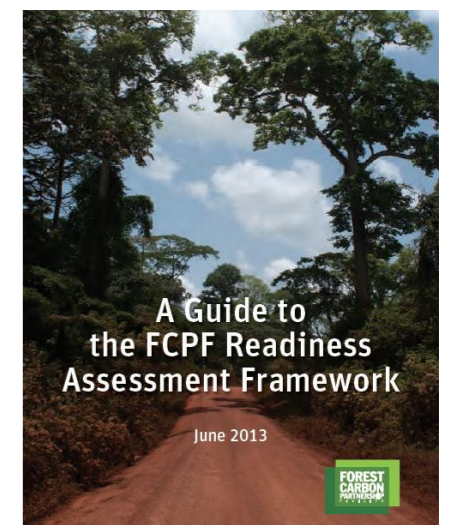


**Component 1: Readiness Organization and Consultation**

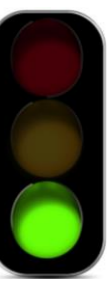
Readiness target



**Readiness**



# Progress so far: street light explanation



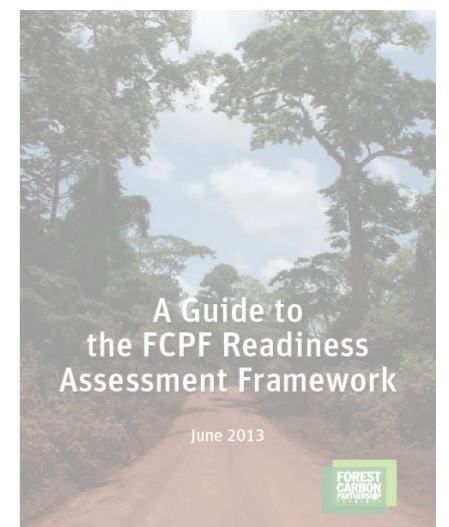
## Component 1: Readiness Organization and Consultation

Readiness target

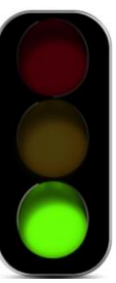
Midterm target

Mid Term

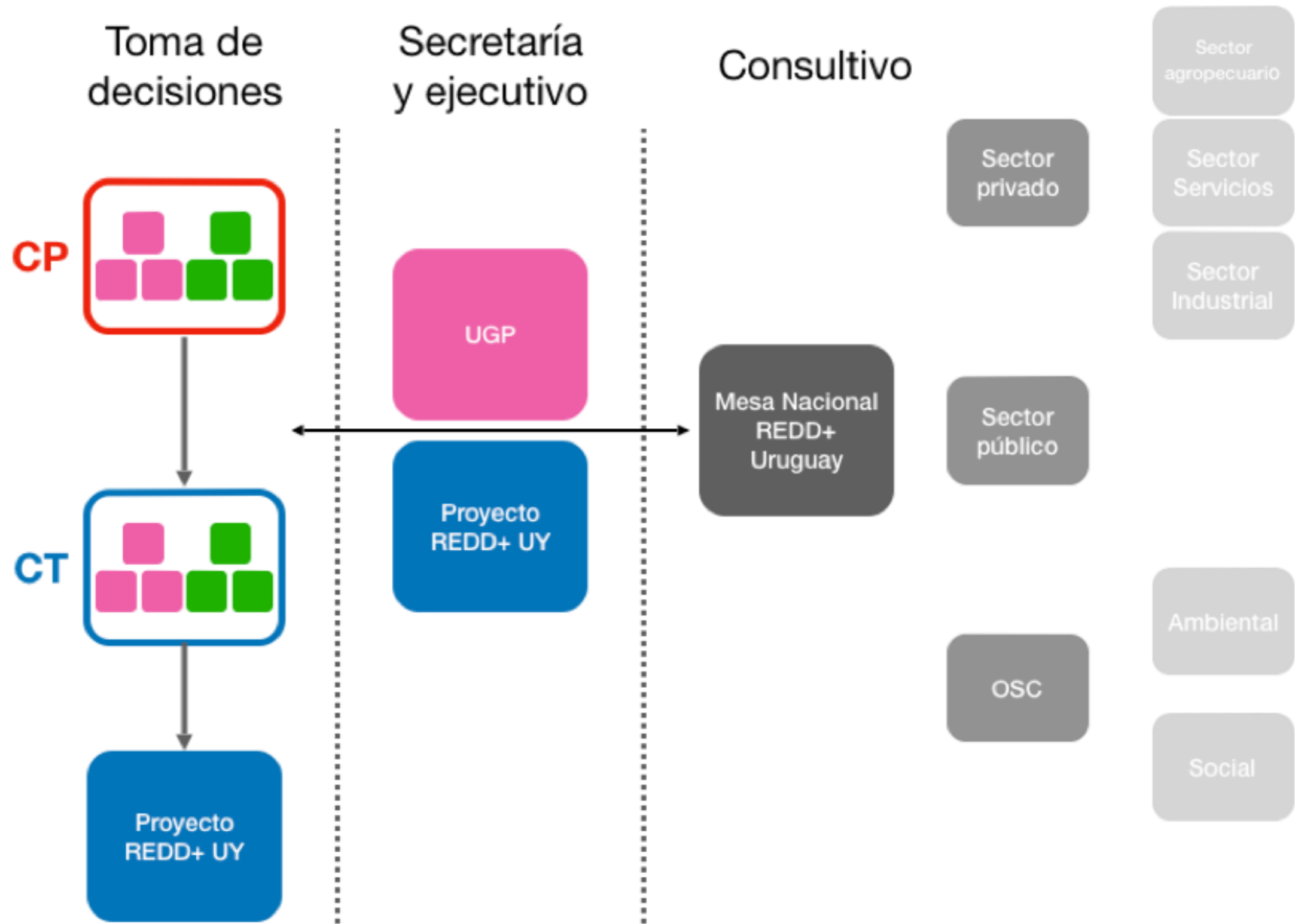
Readiness



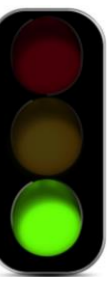
# Progress so far: street light



Component 1: Readiness Organization and Consultation	Readiness target	Midterm target
<b>1a. National REDD+ Management Arrangements</b>		
Accountability and transparency	Orange	Yellow
Operating mandate and budget	Yellow	Yellow
Multi-Sector coordination mechanisms and cross-sector collaboration	Green	Green
Technical supervision capacity	Yellow	Green
Funds management capacity	Orange	Yellow
Feedback and grievance redress mechanism	Red	Yellow

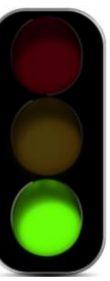


# Progress so far: street light



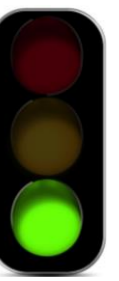
<b>Component 1: Readiness Organization and Consultation</b>	Readiness target	Midterm target
<b>1b. Consultation, Participation, and Outreach</b>		
Participation and engagement of key stakeholders	Yellow	Green
Consultation Processes	Yellow	Green
Information sharing and accessibility of information	Yellow	Green
Implementation and public disclosure of consultation outcomes	Green	Green

# Progress so far: street light



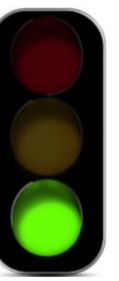
<b>Component 2: REDD+ Strategy Preparation</b>	Readiness target	Midterm target
<b>2a. Assessment of Land Use, Land Use Change Drivers, Forest Law, Policy and Governance</b>		
Assessment and analysis	Yellow	Green
Prioritization of direct and indirect drivers/ barriers to forest carbon stock enhancement	Orange	Yellow
Links between drivers/barriers and REDD+ activities	Orange	Yellow
Action plans to address natural resource rights, land tenure, governance	Orange	Green
Implications for forest law and policy	Orange	Yellow

# Progress so far: street light



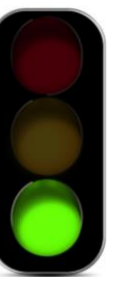
Component 2: REDD+ Strategy Preparation	Readiness target	Midterm target
<b>2b. REDD+ Strategy options</b>		
Selection criteria and diagnostic questions	Orange	Yellow
Feasibility assessment	Orange	Yellow
Implications of strategy options on existing sectoral policies	Orange	Yellow
<b>2c. Implementation Framework</b>		
Adoption and implementation of legislation / regulations	Red	Green
Guidelines for implementation	Red	Yellow
Benefit sharing mechanism	Red	Yellow
National REDD+ registry and system monitoring REDD+ activities	Red	Yellow

# Progress so far: street light



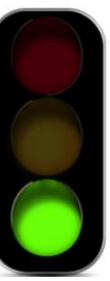
<b>Component 2: REDD+ Strategy Preparation</b>	Readiness target	Midterm target
<b>2d. Social and Environmental Impacts</b>		
Analysis of social and environmental safeguard issues	Orange	Yellow
REDD+ strategy design with respect to impacts	Red	Yellow
Environmental and Social Management Framework	Orange	Yellow

# Progress so far: street light



<b>Component 3: Reference Emissions Level / Reference Levels</b>	Readiness target	Midterm target
Demonstration and methodology	Yellow	Green
Use of historical data, and adjusted for national circumstances	Yellow	Yellow
Technical feasibility of the methodological approach, and consistency with UNFCCC/IPCC guidance and guidelines	Yellow	Yellow

# Progress so far: street light



<b>Component 4: Monitoring Systems for Forests, and Safeguards</b>	Readiness target	Midterm target
<b>4a. National Forest Monitoring System</b>		
Documentation of monitoring approach		
Demonstration of early system implementation		
Institutional arrangements and capacities		
<b>4b. Information System for Multiple Benefits, Other Impacts, Governance, and Safeguards</b>		
Identification of relevant non-carbon aspects, and social and environmental issues		
Monitoring, reporting and information sharing		
Institutional arrangements and capacities		

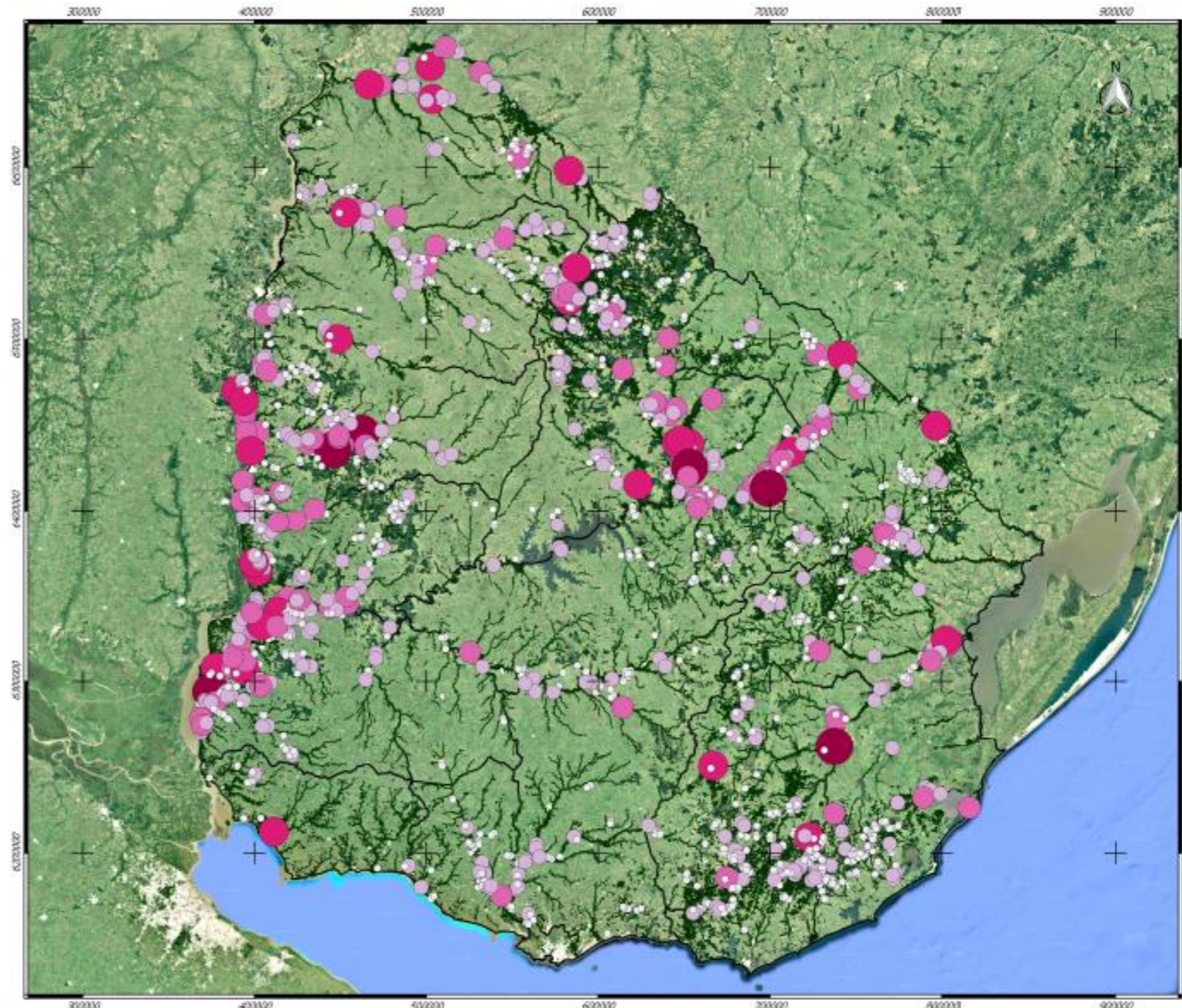
Component 1: Readiness Organization and Consultation	Readiness target	Midterm target
<b>1a. National REDD+ Management Arrangements</b>		
Accountability and transparency	Orange	Yellow
Operating mandate and budget	Yellow	Yellow
Multi-Sector coordination mechanisms and cross-sector collaboration	Green	Green
Technical supervision capacity	Yellow	Green
Funds management capacity	Orange	Yellow
Feedback and grievance redress mechanism	Red	Yellow
Consultation Processes	Yellow	Green
Information sharing and accessibility of information	Yellow	Green
Implementation and public disclosure of consultation outcomes	Green	Green
Component 2: REDD+ Strategy Preparation	Readiness target	Midterm target
<b>2a. Assessment of Land Use, Land Use Change Drivers, Forest Law, Policy and Governance</b>		
Assessment and analysis	Yellow	Green
Prioritization of direct and indirect drivers/ barriers to forest carbon stock enhancement	Orange	Yellow
Links between drivers/barriers and REDD+ activities	Orange	Yellow
Action plans to address natural resource rights, land tenure, governance	Orange	Green
Implications for forest law and policy	Orange	Yellow
Selection criteria and diagnostic questions	Orange	Yellow
Feasibility assessment	Orange	Yellow
Implications of strategy options on existing sectoral policies	Orange	Yellow
<b>2c. Implementation Framework</b>		
Adoption and implementation of legislation / regulations	Red	Green
Guidelines for implementation	Red	Yellow
Benefit sharing mechanism	Red	Yellow
National REDD+ registry and system monitoring REDD+ activities	Red	Yellow
Analysis of social and environmental safeguard issues	Orange	Yellow
REDD+ strategy design with respect to impacts	Red	Yellow
Environmental and Social Management Framework	Orange	Yellow
Component 3: Reference Emissions Level / Reference Levels	Readiness target	Midterm target
Demonstration and methodology	Yellow	Green
Use of historical data, and adjusted for national circumstances	Yellow	Yellow
Technical feasibility of the methodological approach, and consistency with UNFCCC/IPCC guidance and guidelines	Yellow	Yellow
Institutional arrangements and capacities	Orange	Yellow
<b>4b. Information System for Multiple Benefits, Other Impacts, Governance, and Safeguards</b>		
Identification of relevant non-carbon aspects, and social and environmental issues	Yellow	Green

# Progress so far: NR+S



## Tax Incentives

- Documents generated so far

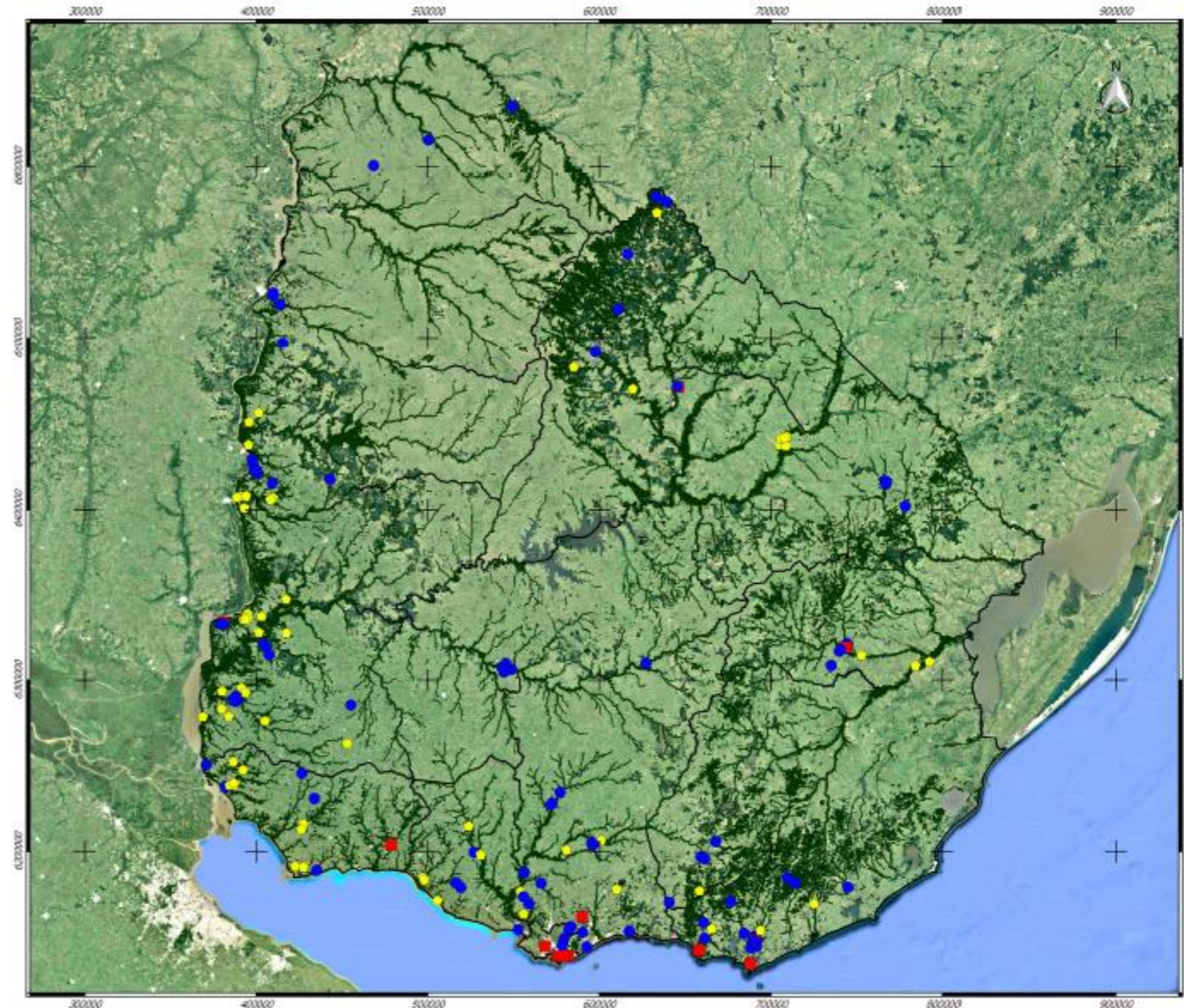


# Progress so far: NR+S



## Illegal Activities

- Documents generated so far

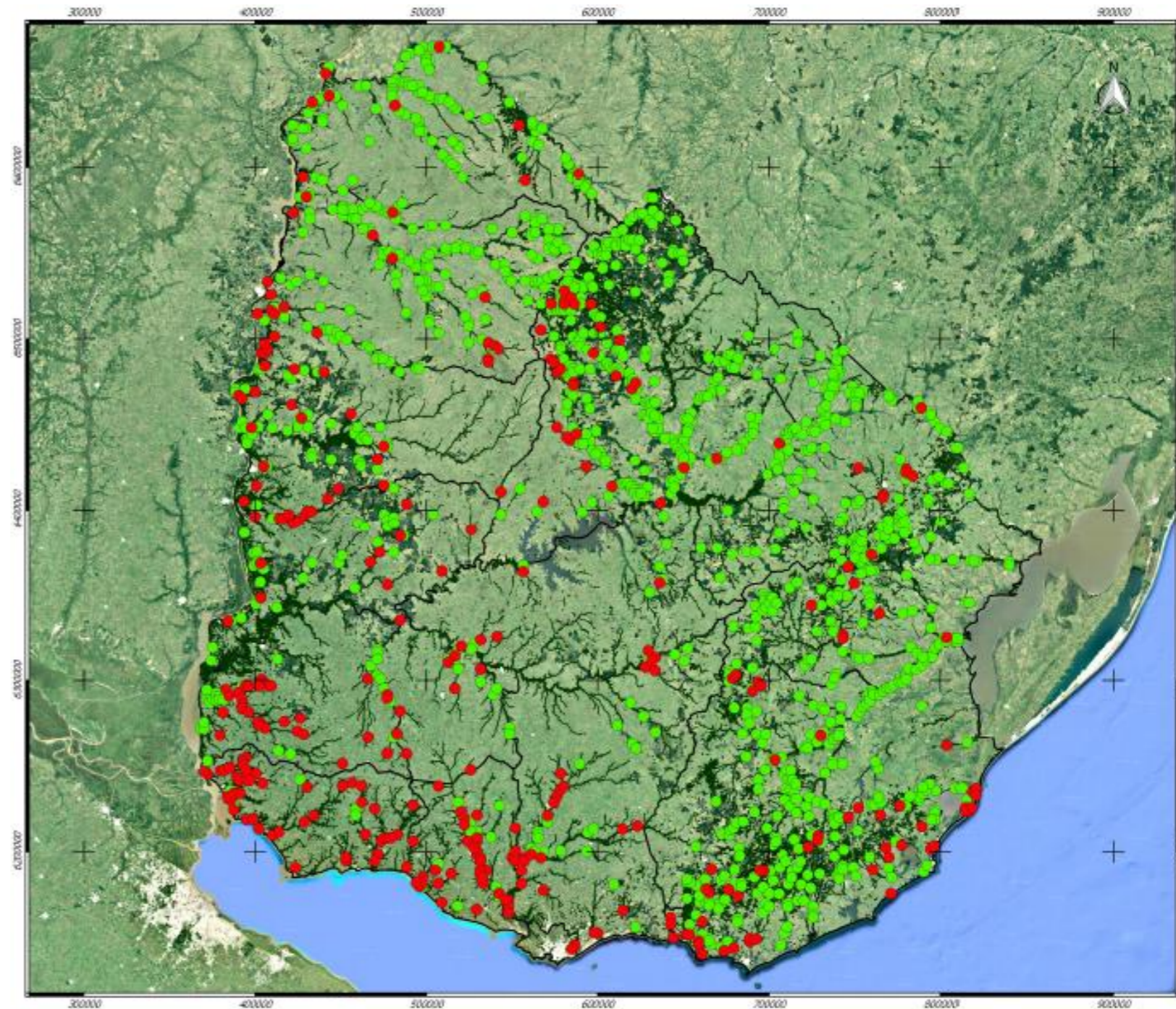


# Progress so far: NR+S



## Invasive Species

- Documents generated so far



# Progress so far: NR+S



- Documents generated so far
- Strategic Lines
- Institutional Framework
- Financial Framework
- Incentive Mechanisms
- Management and Conservation of forests in multifunctional landscapes
- Enforcement
- Education, awareness and capacity building
- Information system
- Research

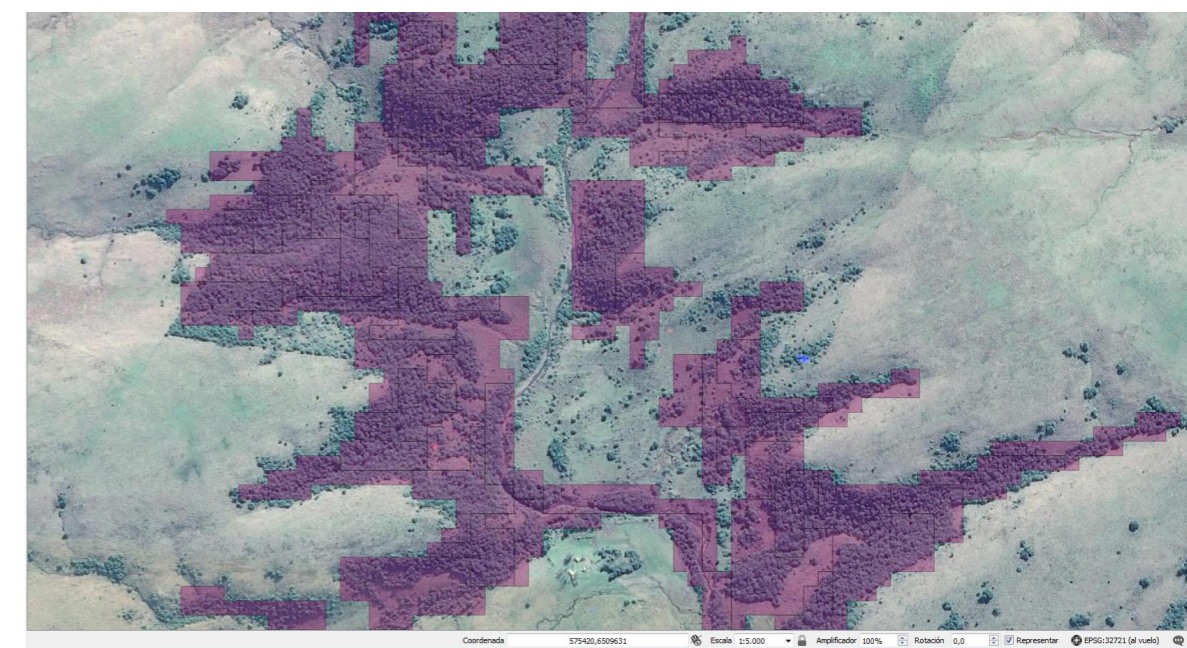
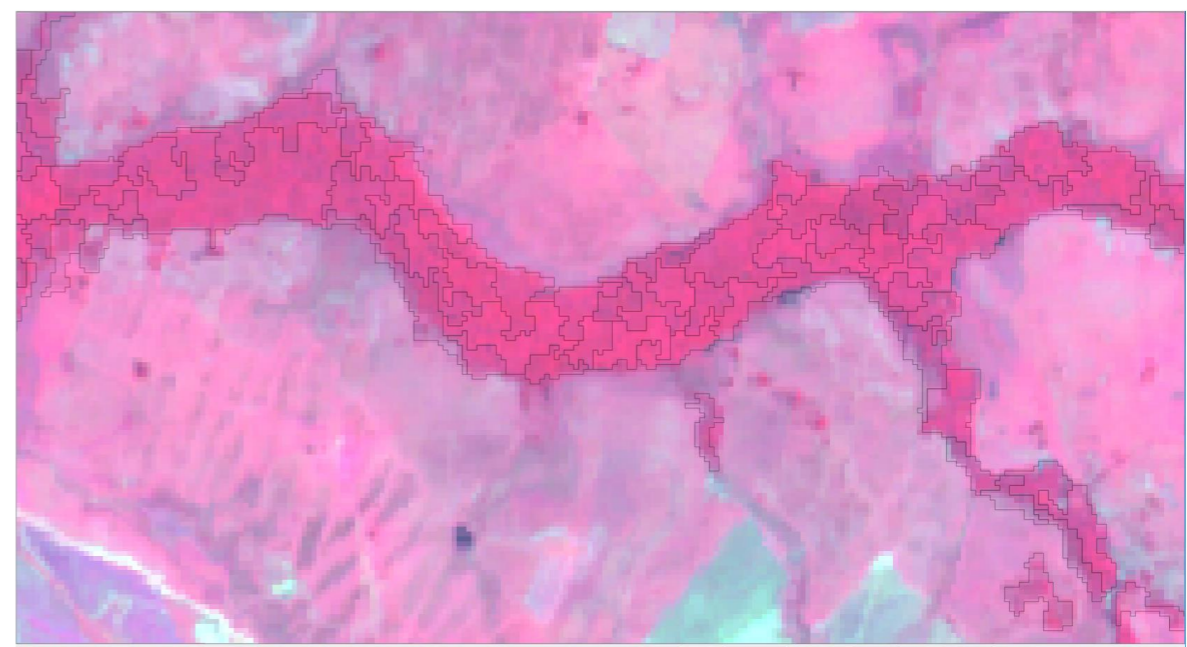
# Progress so far: FREL

- So far



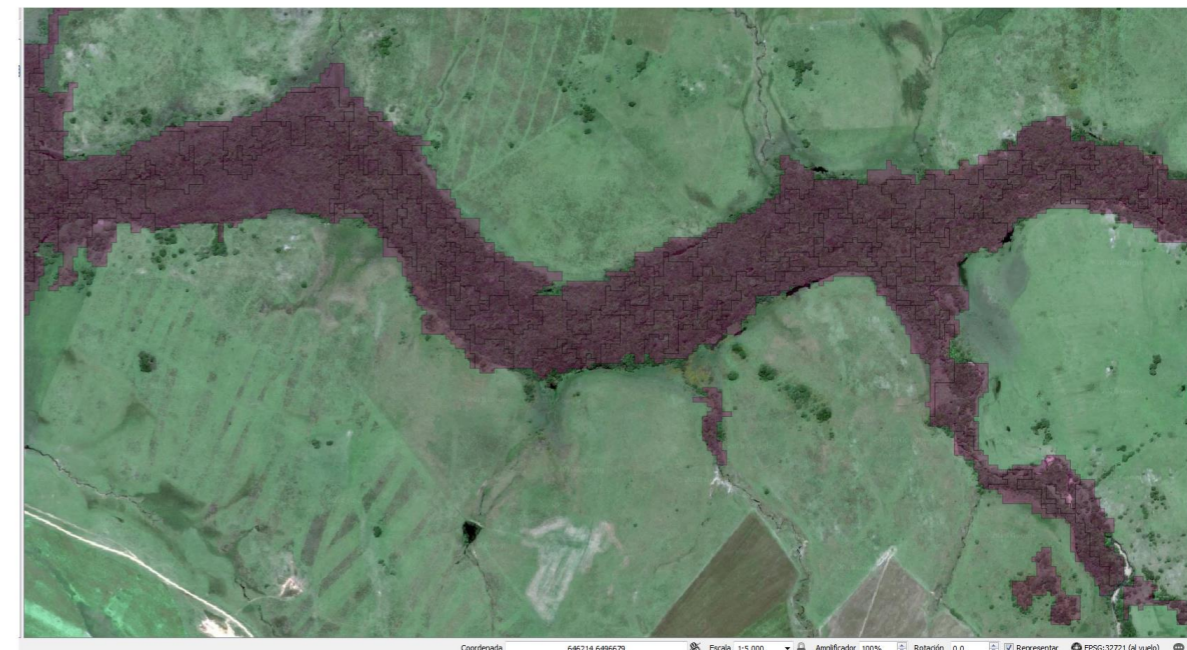
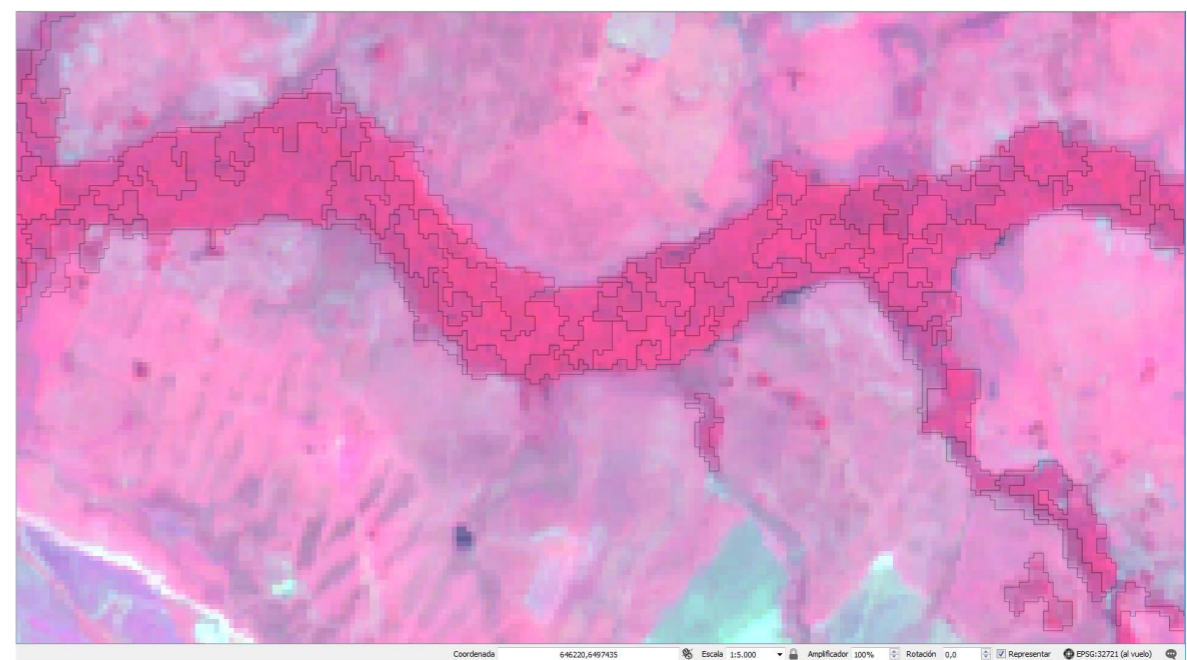
# Progress so far: FREL

- So far
- In the making, particular challenges



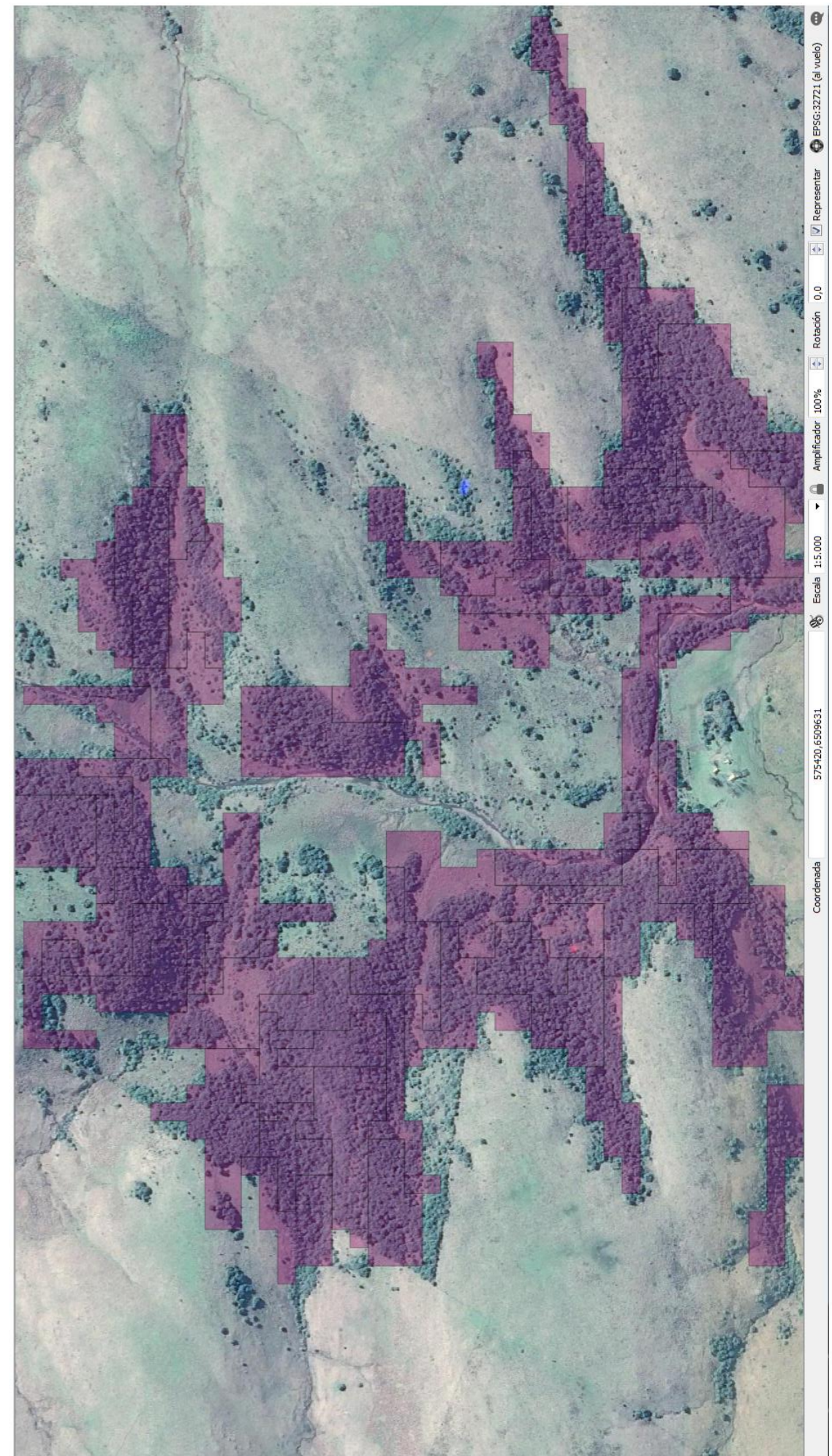
# Progress so far: FREL

- So far
- In the making, particular challenges **shape**



# Progress so far: FREL

- So far
- In the making, particular challenges **density of woodlands**



# Progress so far: FREEL



- So far
- In the making, particular challenges
- Step wise

**Tier 1 - 2 Def**



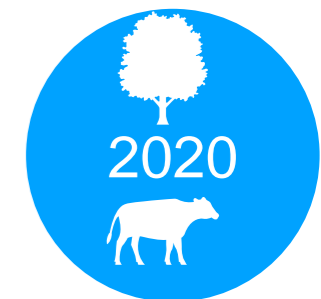
**Tier 2 Def**



**Tier ? Deg**



**Tier ?**

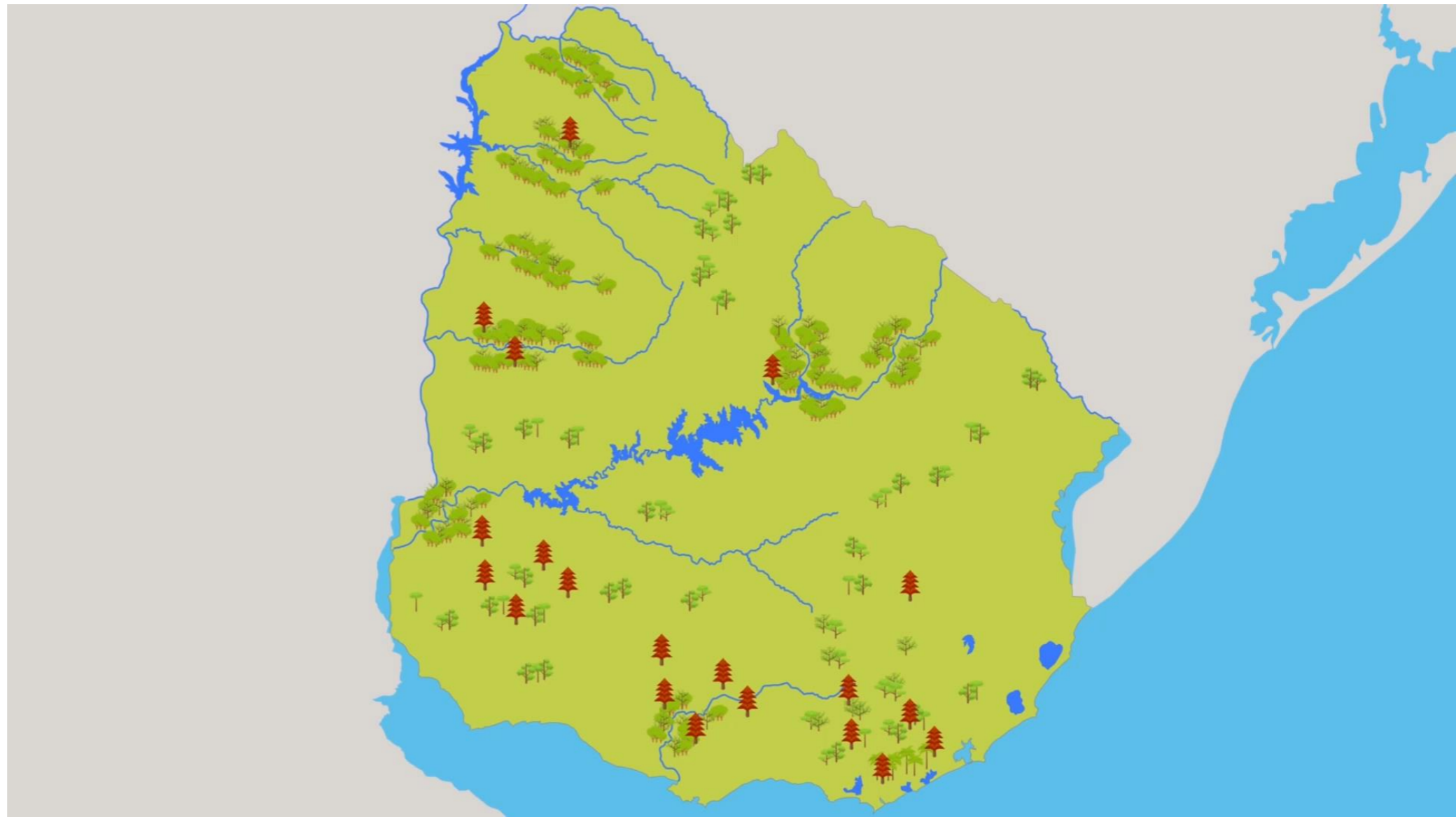


# Progress so far: NFMS+SIS

- NFMS and SIS built together
- Progress in NFMS

# Progress so far: NFMS+SIS

- NFMS and SIS built together
- Progress in NFMS
- How things should look like by the time we finish



# Next steps

- We are not presenting an R-  
Package yet, but we want to start  
thinking about the transition now.
- Institutional connection between  
readiness and RBP.
- Urban forests FREL and Strategy.
- Priority areas for implementation.
- Speed disbursement.

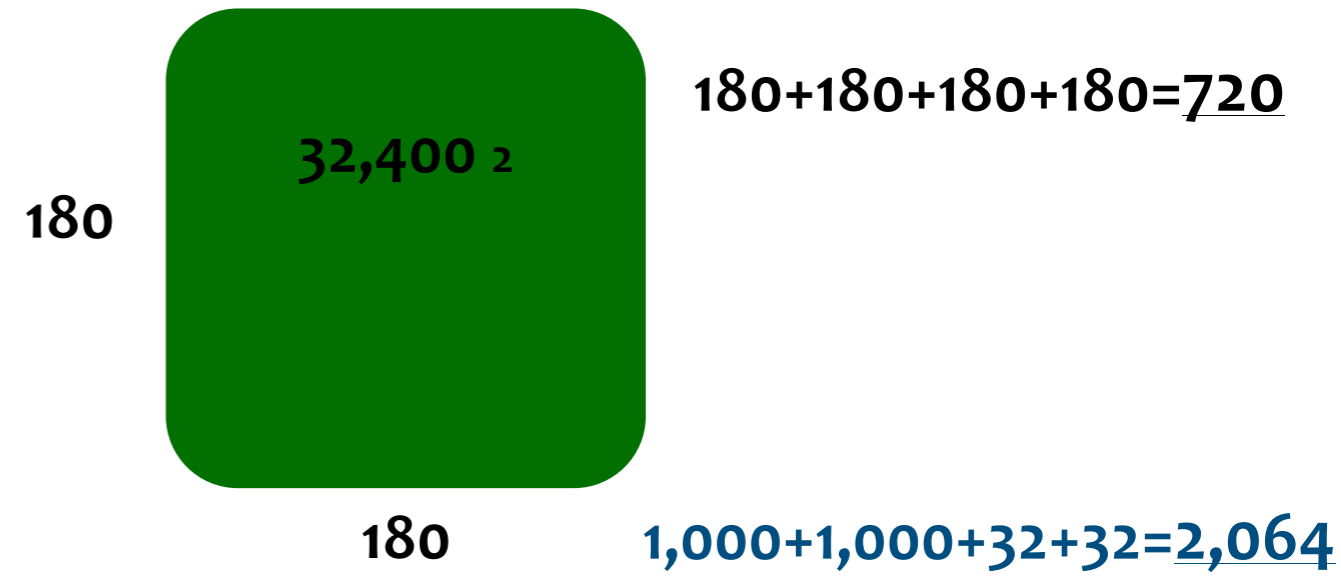
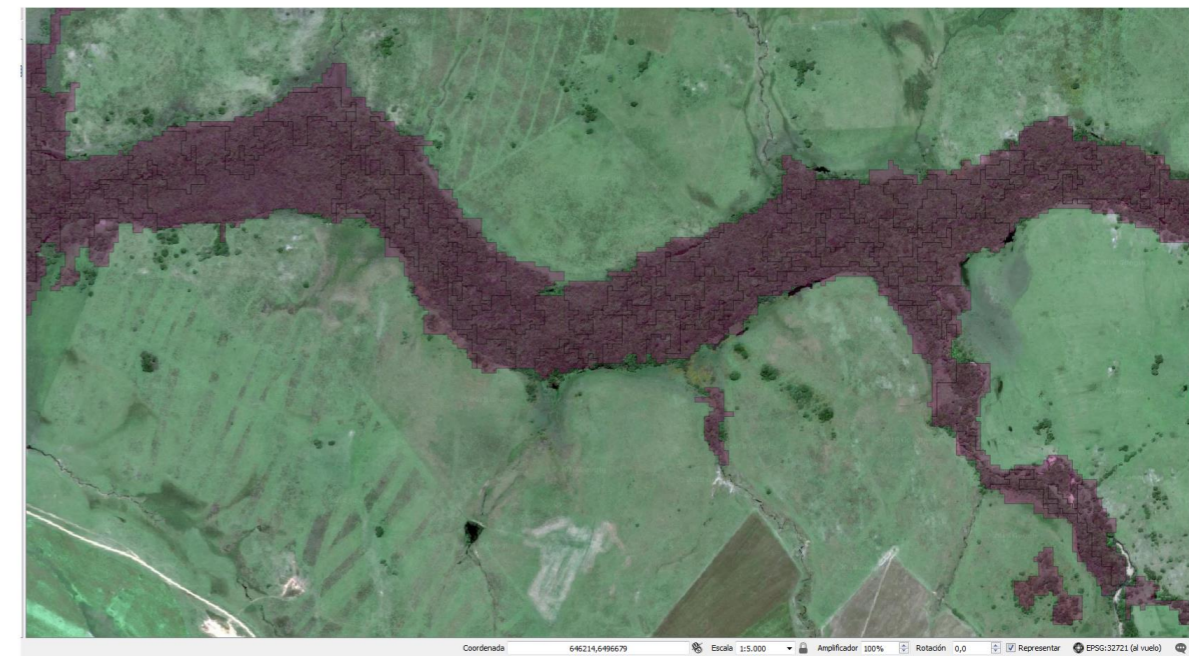
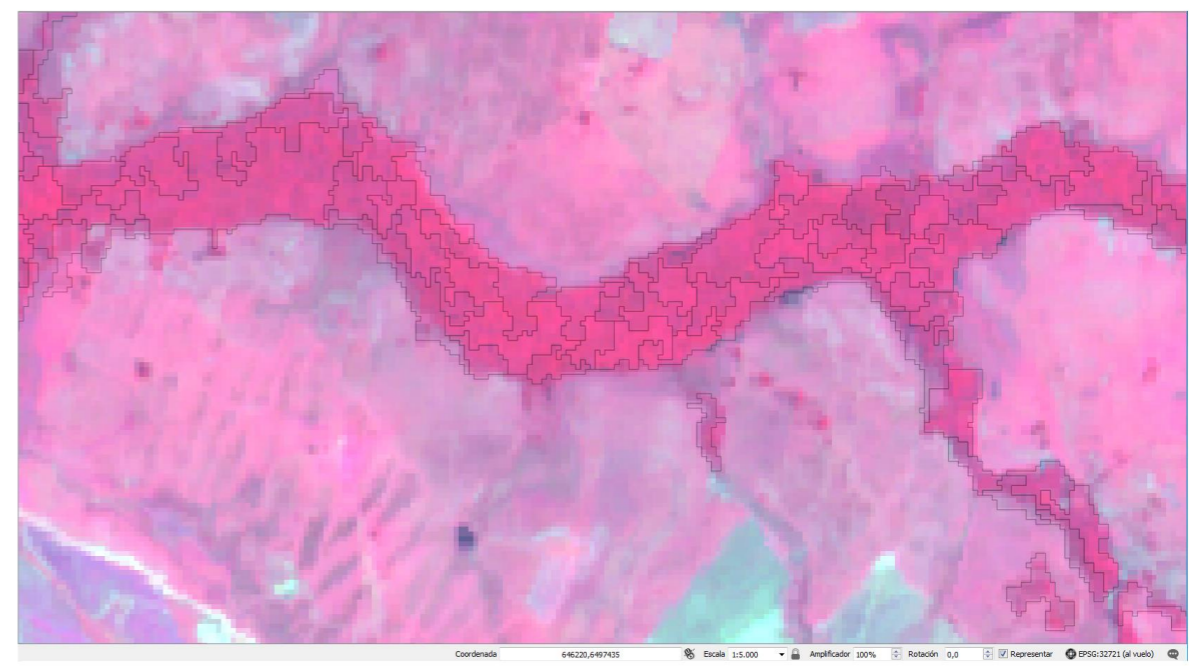
**Thank you**

REDD+  
UY



# Progress so far: FREL

- So far (decir lo que se generó y que estamos a nada de un FREL Tier 2 de deforestación)
- In the making, particular challenges **shape**



1,000

32,000  $\approx$