



FCPF Technical Advisory Panel

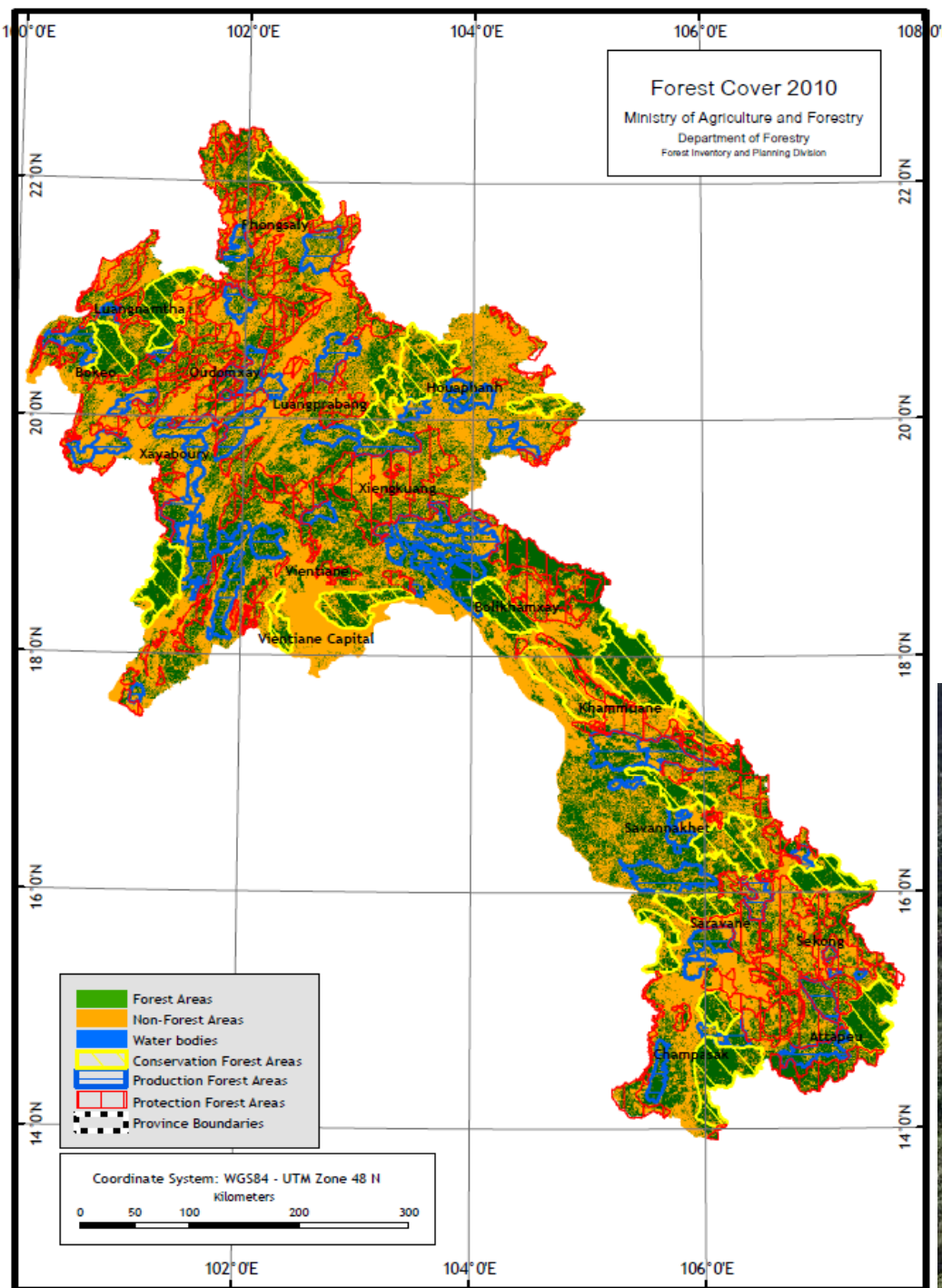
Lao PDR R-PP: Comments by the TAP

Nov. 1-3, 2010
FCPF Participants Committee
Washington DC

For TAP review team Lao PDR: Jayant Sathaye

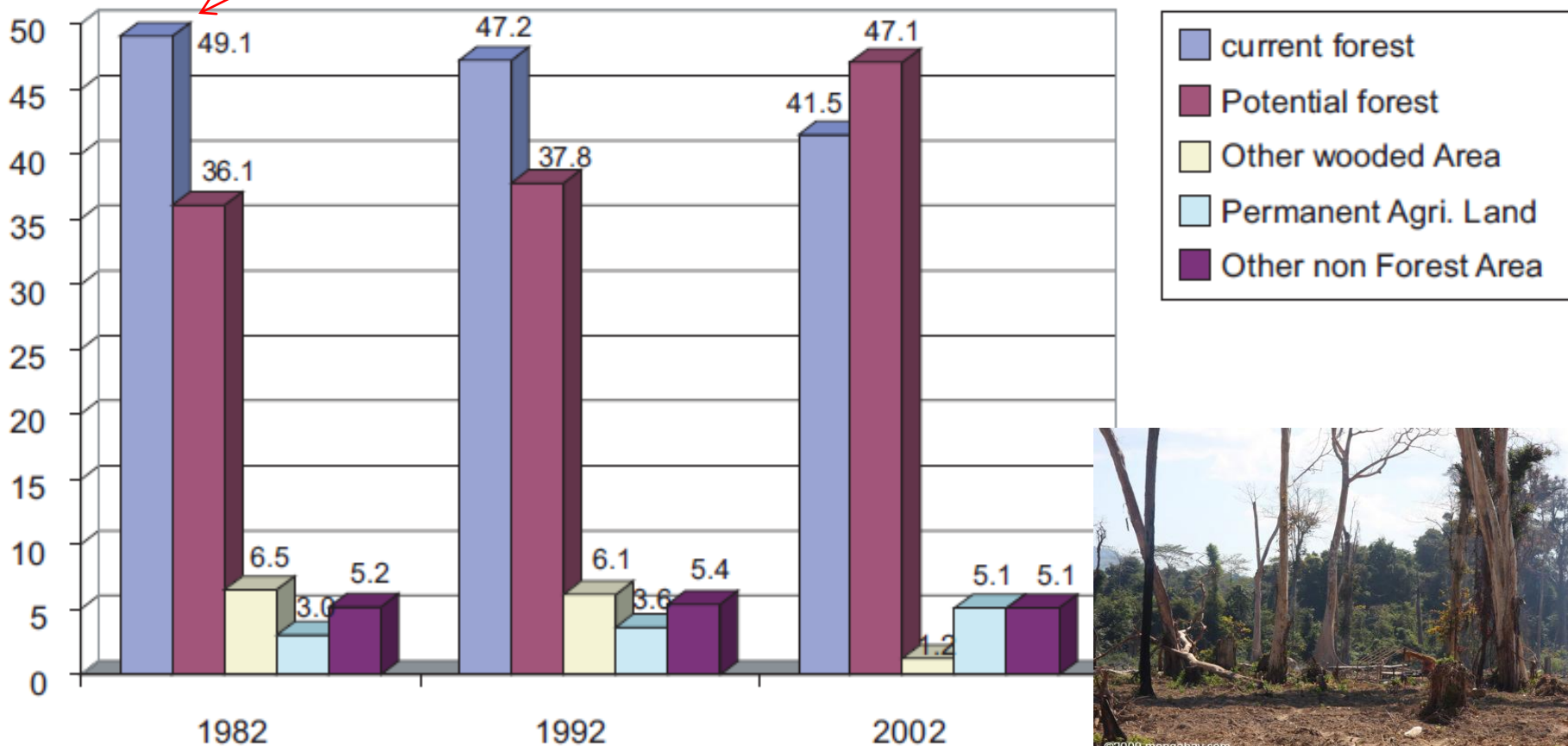
Map of Forest Categories in Lao PDR

Deforestation →
Rubber Plantation



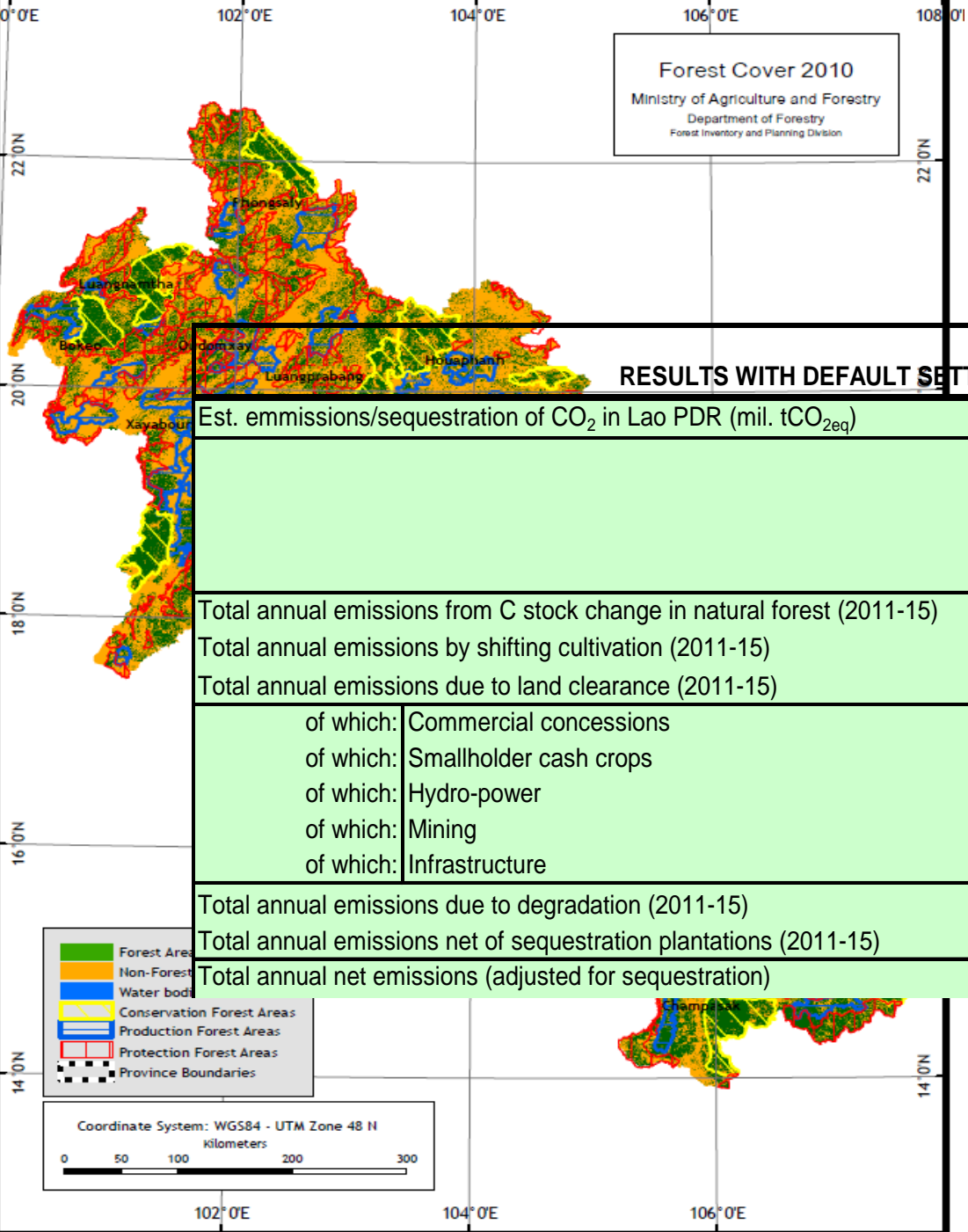
Lao PDR -- Changes in forest and land use (1982, 1992 and 2002)

Forest: Canopy Density > 20%; height 5 meters Mostly Unstocked (logged) Forest



Map of Forest Categories in Lao PDR

Forest Cover 2010
 Ministry of Agriculture and Forestry
 Department of Forestry
 Forest Inventory and Planning Division



RESULTS WITH DEFAULT SETTINGS

Est. emissions/sequestration of CO ₂ in Lao PDR (mil. tCO _{2eq})		RESULTS		
		Average annual area affected ('000ha)	Average annual emissions (mil.tCO _{2eq})	Percent of total emissions of CO ₂
Total annual emissions from C stock change in natural forest (2011-15)			-46.84	100.00%
Total annual emissions by shifting cultivation (2011-15)		57.3	-9.95	21.25%
Total annual emissions due to land clearance (2011-15)		67.2	-9.28	19.82%
of which:	Commercial concessions	34.2	-4.72	10.08%
of which:	Smallholder cash crops	14.7	-2.02	4.32%
of which:	Hydro-power	13.1	-1.81	3.87%
of which:	Mining	5.1	-0.70	1.50%
of which:	Infrastructure	0.2	-0.02	0.05%
Total annual emissions due to degradation (2011-15)		9,776.7	-23.34	49.83%
Total annual emissions net of sequestration plantations (2011-15)		67.2	-4.26	9.10%
Total annual net emissions (adjusted for sequestration)			-51.10	



Overall Summary of the Second Review: 1

Strengths of the R-PP Document:

- R-PP is **very well composed and addresses all the key issues** requested by FCPF for five of the six components
- It **provides in-depth information** about both deforestation and degradation in Lao PDR regions
- In formulating the R-PP, Lao conducted **consultation processes** that included other ministries with legal responsibilities for drivers of deforestation and degradation
- Very good coverage of strategy options and the REDD implementation framework
 - Explicit inclusion of deforestation and degradation activities and costs and benefits
- Detailed explanation of the reference scenarios and monitoring, reporting and verification factors
 - Unique feature compared to many earlier R-PPs; lays out a plan for and analyses reference and mitigation scenarios
- The R-PP **highlights** the coverage of GHG emissions, and governance and co-benefits of REDD-related activities

Overall Summary of the Second Review: 2

Selected areas that need further work in the R-PP or during the implementation phase: Challenges and Recommendations

- Budgets not uniformly distributed
 - 2a budget (\$60K) is too small and 2b (\$4.5m) and 2c (\$1.7m) is very large
- Component 6 draft was submitted yesterday



Overall Summary

Component 1 a) Standard has been met
Component 1 b) Standard has been met

Component 2 a) Standard has been met
Component 2 b) Standard has been met
Component 2 c) Standard has been met
Component 2 d) Standard has been met

Component 3 Standard has been met

Component 4 Standard has been met

Component 5 Standard has been met

Component 6 Standard has not been met



Stages in consultation and knowledge sharing process

