

Nepal's R-Package REDD+ readiness progress & Multi- stakeholder self-assessment

Sindhu Prasad Dhungana, PhD
Mohan Poudel, PhD
REDD Implementation Center Nepal

Forest Carbon Partnership Facility (FCPF)
Participants Assembly (PA9) and Participants Committee (PC22) Meeting
September 26-30, 2016, Accra, Ghana

Presentation outline

- Objective of the presentation
- New political development
- R-Package: REDD+ readiness Progress
- R-Package: Multi-stakeholder Self assessment process and results
- Progress under the Carbon Fund
- Acknowledgement



Objective

- Update the FCPF on REDD+ Readiness Progress in Nepal
- Present the findings of multi-stakeholder self-assessment
- Receive valuable feedback
- Request to FCPF Participant Committee to endorse Nepal's REDD+ Readiness Self Assessment Report



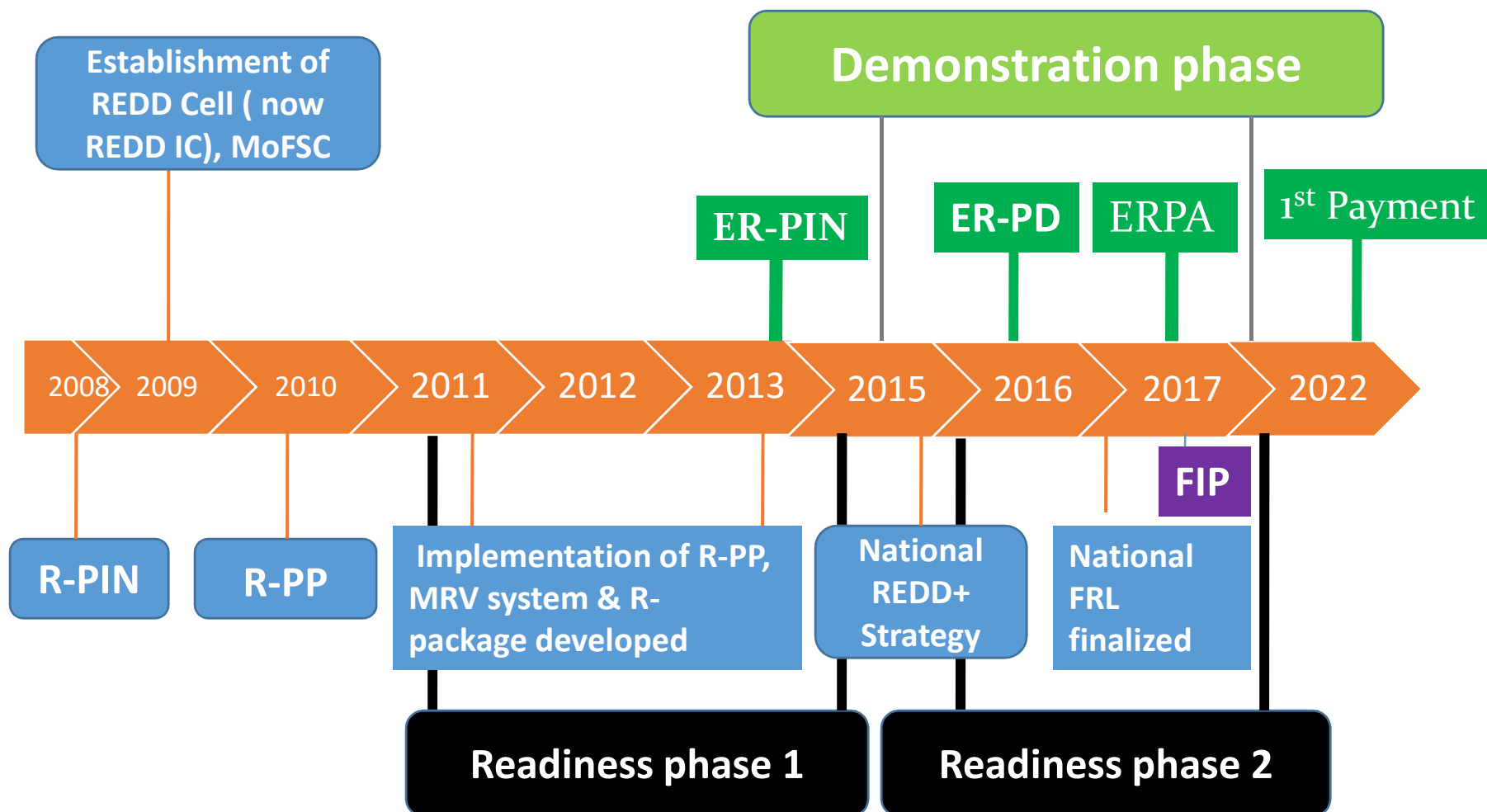
New Political Development

- New constitution (2015)
 - Federal structure: 7 Provinces
 - Three tier governance: Federal, Provincial, and Local Governments
- Implications to REDD+:
 - Institutional arrangement,
 - Cost/benefit sharing
- A task force is working on restructuring of Ministry of Forest and Soil Conservation.



Government of Nepal
Ministry of Forests and Soil Conservation
REDD Implementation Center
Babar Mishal, Kathmandu

Evolution of REDD+ in Nepal



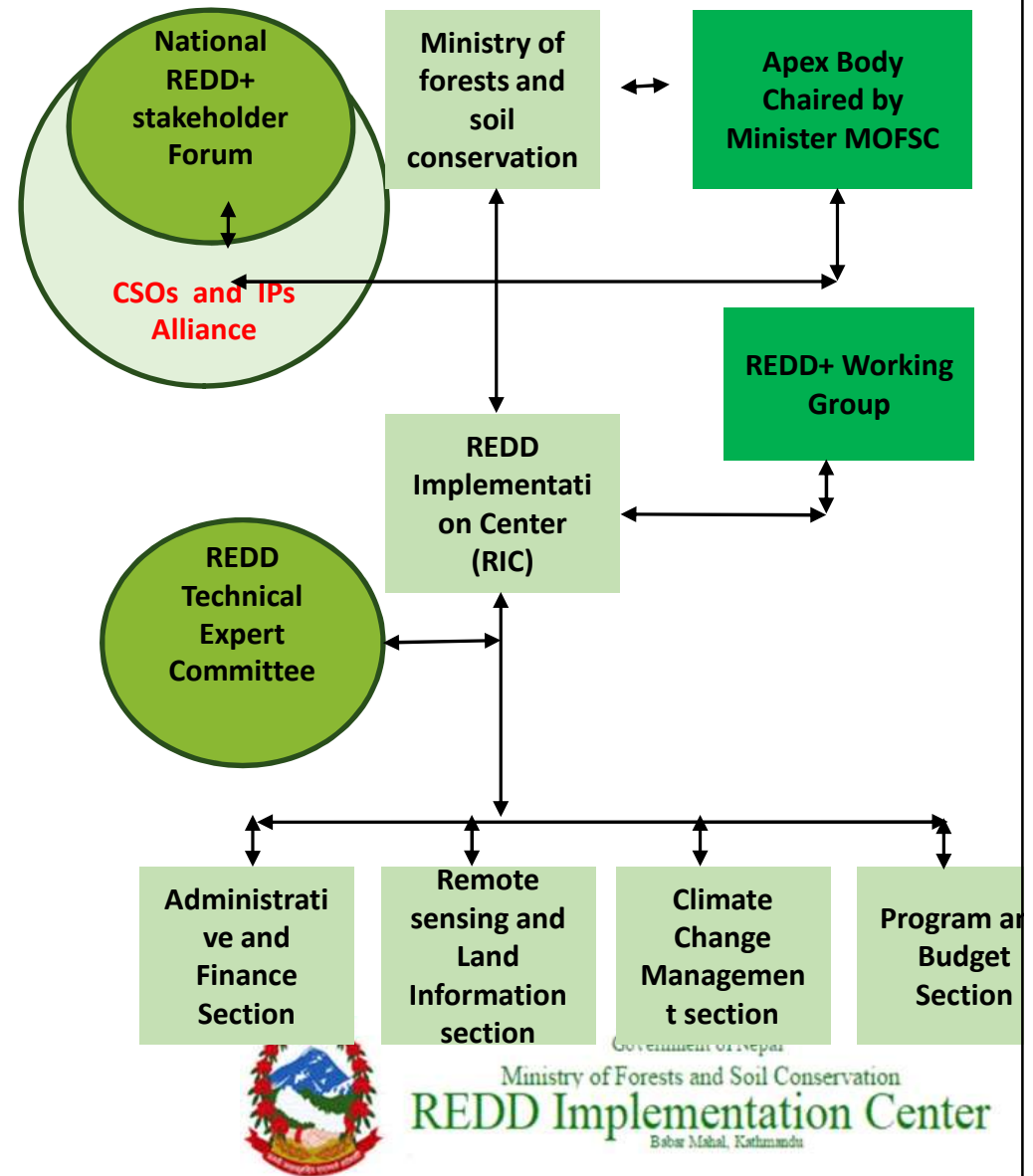
R-Package: Overview of REDD+ readiness Progress

Component 1: Organization and Consultation

- Management arrangement
- Capacity building activities using FCPF readiness fund
- IPOs and CSOs actively engaged in Overall REDD+ processes

Further steps

- Continuation of outreach and awareness activities consistently



General Consultation and Decision Making Process

- Agenda are discussed in Multistakeholder Forum at different stages & levels- eg. REDD Strategy- 27 District, 5 regional and 2 National levels
- REDD IC ensures the agenda are integrated into the readiness processes
- Outcomes are shared through website, email, and multistakeholder meetings for further feedbacks
- Discussed in REDD WG and decisions are made
- Decisions are endorsed at Ministry level /Apex body if needed



Government of Nepal
Ministry of Forests and Soil Conservation
REDD Implementation Center
Babar Mahal, Kathmandu

Component 2: National REDD+ Strategy

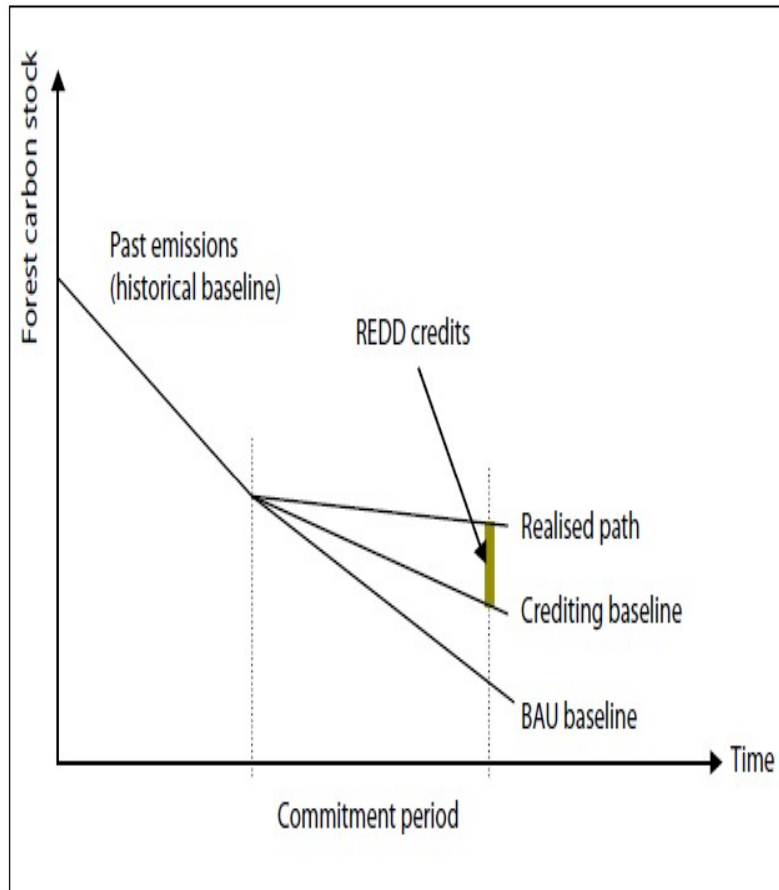
- REDD Strategy drafted and in the approval process
- Many analytical studies were carried out to complement National REDD Strategy preparation
- Social and Environmental Impacts
 - SESA and ESMF
 - REDD+SES

Further steps

- Interpretation of Cancun safeguards and SIS
- National REDD+ registry and monitoring system



Component 3: Reference Emission Level



- National FRL estimation in progress
- Targeting 2nd Jan 17 for submission
- 3 activities, 2 pools and 1 gas
- Use of proxy indicators for forest degradation estimation
- Adopting stepwise approach

Further steps

- Biomass modeling
- Remeasurement of more sample plots
- Regular updating



Component 4: Monitoring & Measurement, Reporting and Verification (M&MRV) system

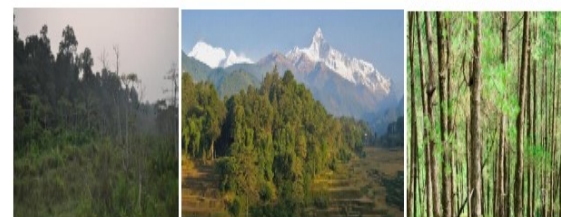
- MRV study completed
- The proposal estimates approx. 5 million US \$ for institutionalization of MRV
- DFRS is assigned for MRV
- New institutional set up in DFRS approved by the government

Next steps

- Capacity building to implement the MRV system from national to local level
- Generate required data for effective MMR

Development of a Measurement, Reporting and Verification (MRV) System for Emissions and Removals

Contract No.: FCPF/REDD/S/QCBS-7



MRV Full Cost Proposal



Government of Nepal
Ministry of Forests and Soil Conservation
REDD Implementation Center
Babar Mahal, Kathmandu

R-Package: Multi-stakeholder Self-Assessment Process

- Multi-stakeholder Inception Workshop (Feb, 2015)
- District, regional and focus groups consultations (March-June, 2015)
- Review of reports, documents and results related to REDD+ Readiness (Feb-July, 2015)
- Multi-stakeholder national sharing workshop (July, 2015)
- Feedback received from central FECOFUN, NEFIN Dalit networks, HIMAWANTI, ICIMOD, USAID, WWF via email
- Final workshop on Multi-stakeholder self-assessment (July 2016)
- Decision of REDD Working Group to submit the R-Package requesting PC endorsement (July 2016)



National level: 3

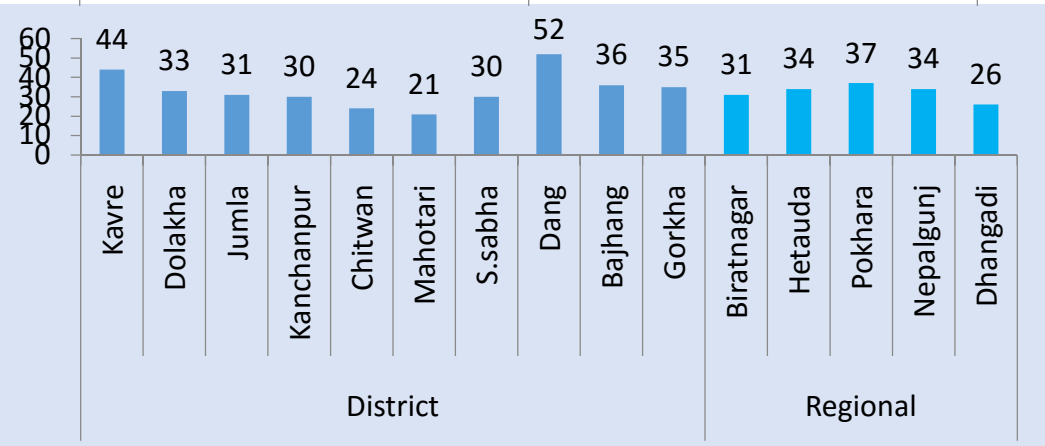
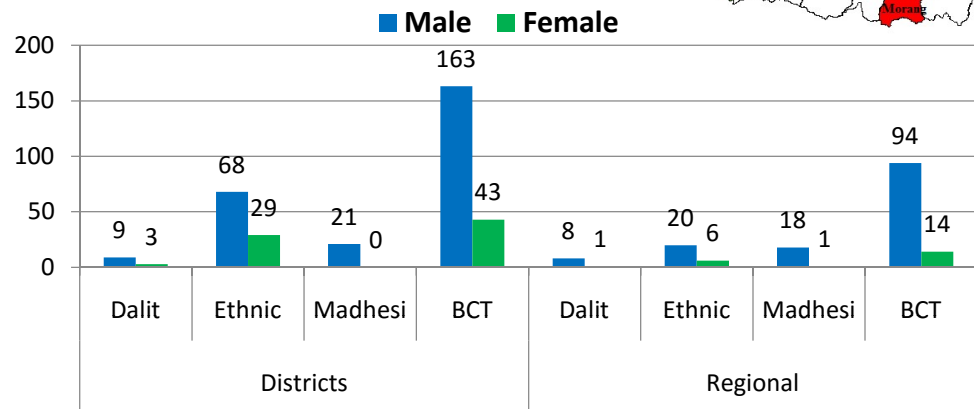
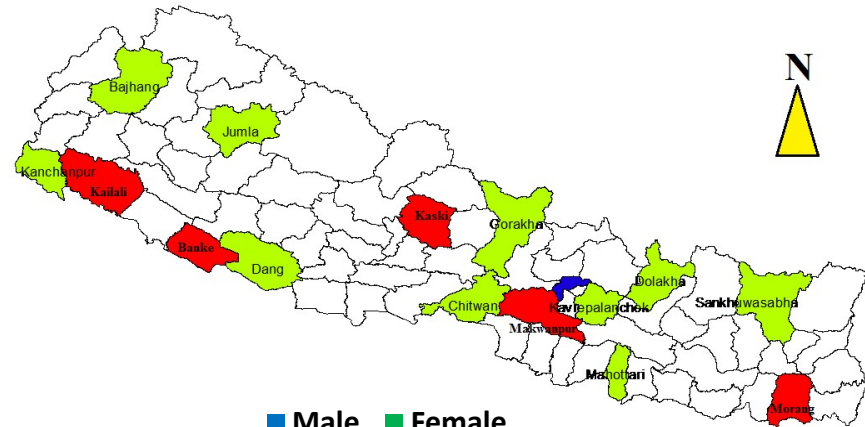
Regional: 5

District level: 3

FGD (IPS, CSOs & Professionals): 3

**Total Participants:
596**

Women: 36%



Government of Nepal
Ministry of Forests and Soil Conservation
REDD Implementation Center
Babar Mahal, Kathmandu

Progress Ranking

Traffic light system in the R-Package Framework was interpreted as below

SN	Status	Progress (%)	Color rank
1	Significant progress	$\leq 76\%$	Green
2	Much progress but much work remaining	51-75%	Yellow
3	Limited initial work started	26-50%	Orange
4	Almost nothing started	$\geq 25\%$	Red



SN	Assessment criteria	Progress rank
1	Accountability and transparency	Green
2	Operating mandate and budget	Green
3	Multisector coordination mechanisms	Green
4	Technical supervision capacity	Yellow
5	Funds management capacity	Yellow
6	Feedback and grievance redress mechanism	Orange
7	Participation and key Stake Holder engagement	Green
8	Consultation processes	Yellow
9	Information sharing and accessibility of information	Yellow
10	Implementation and public disclosure of consultation outcomes	Orange
11	Assessment and analysis	Green
12	Prioritization of direct and indirect drivers to forest carbon stock enhancement	Green
13	Links between drivers/barriers and REDD+ activities	Green
14	Action plans to address natural resource rights, land tenure & governance	Yellow
15	Implications for forest law and policy	Green



SN	Assessment criteria	Progress rank
16	Selection and prioritization of REDD+ strategy options	Yellow
17	Feasibility assessment	Green
18	Implications of strategy options on existing sectorial policies	Green
19	Adoption and implementation of legislation/ regulations	Yellow
20	Guidelines for implementation	Orange
21	Benefit-sharing mechanism	Orange
22	National REDD+ registry and system monitoring REDD+ activities	Orange
23	Analysis of social and environmental safeguard issues	Green
24	REDD+ strategy design with respect to impacts	Green
25	Environmental and Social Management Framework	Green
26	Documentation of monitoring approach	Green
27	Demonstration of early system implementation	Yellow
28	Institutional arrangements and capacities	Green
29	Demonstration of methodology	Green
30	Use of historical data, and adjustment for national circumstances	Yellow

31	Technical feasibility of the methodological approach, and consistency with UNFCCC/IPCC guidance and guidelines	Yellow
32	Demonstration of methodology	Yellow
33	Use of historical data, and adjustment for national circumstances	Yellow
34	Technical feasibility of the methodological approach, and consistency with UNFCCC/IPCC guidance and guidelines	Orange



Progress summary at component level

Components	Sub Components	Progress Status at MTR	Progress Status at R-Package
1. Readiness Organization and Consultation			
	1a. National REDD+ Management Arrangement	GREEN	GREEN
	1b. Consultation, Participation and Outreach	ORANGE	YELLOW
2. Prepare the REDD Strategy			
	2a. Assessment of Land Use, Land-Use Change Drivers, Forest Law, Policy and Governance	ORANGE	GREEN
	2b. REDD Strategy Options	YELLOW	GREEN
	2c. REDD Implementation Framework	RED	ORANGE
	2d. Social and Environmental Impacts	ORANGE	GREEN
3. Reference Emissions Level/Reference Levels		ORANGE	YELLOW
4. Monitoring System for Forests, and Safeguards			
	4a. National Forest Monitoring System	GREEN	GREEN
	4b. Information System for Multiple Benefits, Other Impacts, Governance, and Safeguards	RED	YELLOW



Progress under the Carbon Fund

- LOI signed with the World Bank in June 2015
- ERPD development process underway
 - The World Bank is supporting;
 - REDD IC and the consultant team working closely;
 - Government, civil society and IPOs are facilitating consultation process;
 - 7 member ERPD Steering Team, including Women, IPO, CSO, Dalit, Government;
 - Draft ERPD expected by the end of 2016
 - Consultation process includes FGD, hot spot visit, key informant, stakeholders workshop



Responding to recommendations from PC20

Recommendations of PC 20	How are we addressing?
<ul style="list-style-type: none"> Adjust the REDD+ work program, including benefit sharing approaches, to the new federal structure, as necessary; 	<ul style="list-style-type: none"> A taskforce is working to suggest forestry governance for federal system
<ul style="list-style-type: none"> Address capacity needs and incentivize long term staffing in the REDD+ implementation center; 	<ul style="list-style-type: none"> MFSC has committed to address existing gaps
<ul style="list-style-type: none"> Continue to enhance capacity building, timely dissemination of information, and awareness raising of local stakeholders, especially indigenous peoples and local communities; 	<ul style="list-style-type: none"> Capacity building process is continued Published Policy briefs and disseminated Capacity building activities are planned under additional funding
<ul style="list-style-type: none"> Improve coordination in the development of the safeguard information system and SESA/ESMF 	<ul style="list-style-type: none"> SIS development is one of the planned activities for 2017
<ul style="list-style-type: none"> Improve coordination of forestry and REDD+ related work supported by other development partners 	<ul style="list-style-type: none"> REDD IC has been coordinating through consultations meetings
<ul style="list-style-type: none"> Strengthen national and local level grievance redress mechanisms. 	<ul style="list-style-type: none"> Government is committed to strengthen GRM based on the study report.



Acknowledgement

- REDD IC acknowledges the World Bank (FCPF team) for being so supportive to Nepal (financially, technically)
- We thank all donors and development partners including USAID, DFID, GIZ, NORAD, JICA, FINNIDA, SDC, UN-REDD, WWF, ICIMOD, and other for their continued support
- We thank National IPOs and CSOs for actively undertaking and participating in REDD+ Activities (NEFIN, FECOFUN, ACOFUN, COFSUN, DANAR, NDF, HIMAWANTI, Forest Action, NAFAN, FENFIT, NFA etc)



Thank you very much



Any Questions or Comments???



Government of Nepal
Ministry of Forests and Soil Conservation
REDD Implementation Center
Babar Mahal, Kathmandu

R-Package specific results (Additional Back up Slides)

Component 1: Readiness Organisation and Consultation

Subcomponent 1a. National REDD+ Management Arrangements

S. N.	Assessment Criteria	Strengths	Weaknesses	Areas of improvement
1	Accountability and transparency	<ul style="list-style-type: none"> - Apex, RWG and REDD IC - REDD MS Forum, National CSO-IPO alliance - REDD-IC web page - Meeting Agenda and decisions circulated 	<ul style="list-style-type: none"> - Infrequent meetings - Low NGO/women/private sector representatives in RWG/Apex body - Frequent transfers 	<ul style="list-style-type: none"> - Regularity in meetings - Make more inclusive - Reconstruction may be needed considering national REDD+ entity
2	Operating mandate and budget	<ul style="list-style-type: none"> - Government has established the REDD-IC for overall REDD+ implementation and coordination, which has operating mandate. - The FCPF, UN-REDD and GoN are contributing budget for REDD process 	<ul style="list-style-type: none"> - Disbursements less than committed - Low GoN budget - Weak coordination 	<ul style="list-style-type: none"> - Allocate more budget - Capacitate REDD IC to be able to implement 2nd readiness phase - Establish national entity
3	Multisector coordination mechanisms	<ul style="list-style-type: none"> - Apex Body and MS coordination bodies established - Multi-Stakeholder participation in plans, etc - Active REDD+ multi-stakeholder forums, REDD+ CSOs & IPOs Alliance and REDD experts WG 	<ul style="list-style-type: none"> - Difficult to engage field and Central level staff - Apex Body not meeting - No anticipation of issues 	<ul style="list-style-type: none"> - Multi-sectoral coordination mechanism needs to be strengthened. - Cross-sectoral collaboration plan need to be developed and implemented.
4	Technical supervision capacity	<ul style="list-style-type: none"> - Strong REDD-IC team at Center - Qualified REED-IC - Many Documents - Learning by doing 	<ul style="list-style-type: none"> - Frequent transfers - Few Trained Staff - Limited Regional and District level staff capacities 	<ul style="list-style-type: none"> - Technical and managerial capacity of the staff at the REDD IC and at district level must be improved through providing relevant trainings and learning opportunities.
5	Funds management capacity	<ul style="list-style-type: none"> - Demonstrated Fund Mgmt REDD-IC and CSOs - Accounting and auditing systems - Managing multiple funding sources - I/NGO managing multi donor funds 	<ul style="list-style-type: none"> - FCPF, project based and limited GON Funds - FCPF funded NGOs not always experienced professionals 	<ul style="list-style-type: none"> - Fund management capacity of the REDD IC need to be improved
6	Feedback and grievance redress mechanism	<ul style="list-style-type: none"> - Final draft submitted - Complaint mechanisms exist: Purjis, etc - RTI, Hello Sarkar, complain box, citizen board and CIAA mechanisms - Informal Conflict Management systems 	<ul style="list-style-type: none"> - Limited guidelines + procedures - Weak Report and Recommendations - No 3rd party arbitration mechanism 	<ul style="list-style-type: none"> - Feedback and GRM must be operationalized during the next phase of the readiness and implementation phase.

Component 1: Readiness Organisation and Consultation

Subcomponent 1b. Consultation, Participation, and Outreach

S. N.	Assessment Criteria	Strengths	Weaknesses	Areas of improvement
7	Participation and key Stake Holder engagement	Active participation all levels, esp. central and project districts	<ul style="list-style-type: none"> -No elected Local government -Representation issues -Limited Marginalized, vulnerable and Dalits -Many districts w/ no REDD+ 	<ul style="list-style-type: none"> -Efforts need to be made to distinguish stakeholders, right holders and interest groups -Local level participation must be improved -Local governance representatives need to be fully engaged in the decision making process
8	Consultation processes	<ul style="list-style-type: none"> - More than 30,000 people consulted - LFGs/CFUGs, IPOs regularly consulted - District REDD+ desk - Participatory Documents prep - Readiness 43 districts - Local language extension and radio - 450 LRPs on REDD+ 	<ul style="list-style-type: none"> -Relatively little consultation with marginalized at grass root level. -Insufficient use of mass media tools. -Insufficient use of the extension materials in local languages. -FPIC principle has not been fully implemented 	<ul style="list-style-type: none"> -Consultation process should continue and it should be wider and wider in coming years. -Principle of FPIC must be implemented. -Extension and outreach materials need to be made available in Nepali language.
9	Information sharing and accessibility of information	<ul style="list-style-type: none"> - Dynamic REDD-IC webpage - Many documents, brochures, leaflets - I/NGOs and CSOs engagement - Local language/ FM sharing 	<ul style="list-style-type: none"> - Low literacy (65.9%) - Vulnerable = limited net - No standardized partner info sharing - Limited local language extension 	<ul style="list-style-type: none"> - Major documents related to the REDD+ must be translated into Nepali language - Arrangement need to be made to disseminate information at grassroots level - Information sharing culture need to be developed.
10	Implementation and public disclosure of consultation outcomes	<ul style="list-style-type: none"> - High inclusion in docs - Compulsory public consultations 	<ul style="list-style-type: none"> - Trend of conducting consultation to meet the target. -Outcomes not shared with locals 	<ul style="list-style-type: none"> -Consultation need to be made more useful -A mechanism must be developed so that feedbacks received are well incorporated in the final outcomes. -Principle of FPIC must be implemented in the consultation process.

Component 2: REDD+ Strategy Preparation

Subcomponent 2a. Assessment of Land Use, Land-Use Change Drivers, Forest Law, Policy and Governance

S.N.	Assessment Criteria	Strengths	Weaknesses	Areas of improvement
11	Assessment and analysis	<ul style="list-style-type: none"> - Assessment and analysis on different policies and customary rights have completed incorporating all historical data, management regimes, forest tenure and contemporary forest policies, laws and strategies. 	<ul style="list-style-type: none"> - Assessment and analysis might have not covered all customary rights of indigenous peoples and natural resource management activities implemented by them. 	<ul style="list-style-type: none"> - The assessment and analysis must continue and must cover wider geographical area to find out the more customary practice on natural resource management.
12	Prioritization of direct and indirect drivers to forest carbon stock enhancement	<ul style="list-style-type: none"> - Major drivers and barriers have been identified in the R-PP, other studies conducted during the readiness phase and ER-PIN submitted, 	<ul style="list-style-type: none"> - Prioritization of direct and indirect drivers/barriers to forest carbon stock enhancement has not yet been done 	<ul style="list-style-type: none"> -Prioritization of the drivers/barriers need to be done in coming years in national level and during the ER-PD development process.
13	Links between drivers/barriers and REDD+ activities	<ul style="list-style-type: none"> - REDD+ strategy is formulated -12 working strategies were developed to reduce the causes of DD and future demands of forest products. -ER-PIN developed on the basis of the links between drivers/barriers and REDD+ activities 	<ul style="list-style-type: none"> - Links shown are more subjective rather than objective -Empirical analysis has not been done 	<ul style="list-style-type: none"> -Quantitative analysis of drivers and links between the REDD+ activities and drivers must be encouraged
14	Action plans to address natural resource rights, land tenure, and governance	<ul style="list-style-type: none"> - CBFM systems well organized/legalized - Clear CBFM provisions of communities and GON tenure rights - REDD+ strategy links with SESA - Holistic approach suggested - Land use policy in place - Legal provisions control D and D - Active people's participation 	<ul style="list-style-type: none"> - No action plans to address natural resource rights, land tenure yet. 	<ul style="list-style-type: none"> -Clear, concise and harmonized law and policy action plan to address the issues of natural resource rights, land tenure and governance need to be developed inline with the constitution & national & state level legal frameworks in coming years whenever possible
15	Implications for forest law and policy	<ul style="list-style-type: none"> - Inter-sectorial Policies on Biodiversity, Low Carbon Development, - Agriculture. Climate Change Policy - Forest Policy-2015 with REDD + emphasis - REDD+ is Highest priority (P1) - Limited Carbon rights in Draft Constitution - Thorough Policy, Law Review (PLR) 	<ul style="list-style-type: none"> - Assessment of long term implications for forest law and policy of draft REDD+ strategy has not yet done. 	<ul style="list-style-type: none"> -Long term implications for forest law and policy of the REDD+ strategy must be assessed in future whenever possible.



R-Package results

Component 2: REDD+ Strategy Preparation

Subcomponent 2b. REDD+ Strategy Options

S. N.	Assessment Criteria	Strengths	Weaknesses	Areas of Improvement
16	Selection and prioritization of REDD+ strategy options	<ul style="list-style-type: none"> - Strong Mission, vision and objectives related to carbon and NCB - Fair Benefits sharing mechanisms - Links with non carbon benefits, policy harmonization and forest management systems 	<ul style="list-style-type: none"> -No prioritization of the REDD+ strategy options has been done 	<ul style="list-style-type: none"> -Prioritization of the REDD+ strategy options should be done before the implementation phase commences
17	Feasibility assessment	<ul style="list-style-type: none"> - Result of multiple studies Several studies - SESA and other impacts considered - Positive and negative risks outlined 	<ul style="list-style-type: none"> - Quick assessment of strategy options - Studies recently completed after -- Strategy, not incorporated - Limited cost benefit analysis 	<ul style="list-style-type: none"> -Inconsistencies identified need to be resolved before implementation of the REDD+ strategies
18	Implications of strategy options on existing sectorial policies	<ul style="list-style-type: none"> - Inconsistencies identified and described - Support broader integrated goals - Good community support 	<ul style="list-style-type: none"> - Timeline not developed - Not widely disseminated yet 	<ul style="list-style-type: none"> - Strategy implementation timeline should be developed - Strategy should be widely disseminated

R-Package results

Component 2: REDD+ Strategy Preparation

Subcomponent 2c. Implementation Framework

S. N.	Assessment Criteria	Strengths	Weaknesses	Areas of improvement
19	Adoption and implementation of legislation/regulations	<ul style="list-style-type: none"> - There are number of legislations/regulations related to the REDD+ which have been adopted -Environmental and Social Management Framework in place. 	<ul style="list-style-type: none"> - Specific REDD+ legislation/regulations have not yet been developed except the draft REDD+ strategy. 	<ul style="list-style-type: none"> -Specific or separate REDD+ legislation/regulation need to be developed in future if necessary. -The system need to be operational before the REDD+ implementation commences.
20	Guidelines for implementation	<ul style="list-style-type: none"> - Use existing structures - Involve multiple stakeholders - Enhance local UG representation - Generate data thru monitoring 	<ul style="list-style-type: none"> - Issues of carbon rights and benefit sharing mechanism and REDD+ financing modalities have not yet been finalized 	<ul style="list-style-type: none"> -Lot of works need to be done in finalization of the implementation framework.
21	Benefit-sharing mechanism	<ul style="list-style-type: none"> -A draft benefit sharing mechanism is proposed -Demonstration of transparency cannot be seen until it is implemented 	<ul style="list-style-type: none"> -The mechanism is not finalized and there is no full agreement regarding the proposed mechanism 	<ul style="list-style-type: none"> -Benefit sharing mechanism should be finalized
22	National REDD+ registry and system monitoring REDD+ activities	<ul style="list-style-type: none"> -Works on REDD+ registry and system monitoring is on progress 	<ul style="list-style-type: none"> - The system is not yet developed and operational. 	<ul style="list-style-type: none"> - Needs to be developed and operationalized.



R-Package results

Component 2: REDD+ Strategy Preparation

Subcomponent 2d. Social and Environmental Impacts

S. N.	Assessment Criteria	Strengths	Weaknesses	Areas of improvement
23	Analysis of social and environmental safeguard issues	<ul style="list-style-type: none"> - SESA process finalized - Participatory design - Comprehensive and inclusive - CSO and IPO involved 	<ul style="list-style-type: none"> - SESA was conducted before the REDD+ strategy was finalized - ERP area specific SESA not yet developed 	<ul style="list-style-type: none"> -Harmonization of REDD+ strategy and SESA might be necessary. -Prioritization of SESA options. -Develop a strategy to avoid misuse of FGRM. -Clearly state what options could address what drivers systematically. -Develop a standard Free, Prior and Informed Consent (FPIC) mechanism.
24	REDD+ strategy design with respect to impacts	<ul style="list-style-type: none"> - REDD+ strategy options and SESA have been finalized 	<ul style="list-style-type: none"> - REDD+ strategy has not yet been endorsed by the government. 	
25	Environmental and Social Management Framework	<ul style="list-style-type: none"> - ESAMU designed and being tested - Links to Region and District established 	<ul style="list-style-type: none"> - Not fully operational 	



R-Package results

Component 3: Reference Emissions Level/Reference Levels

S. N.	Assessment Criteria	Strengths	Weaknesses	Areas of improvement
26	Documentation of monitoring approach	<ul style="list-style-type: none"> - Sub national RL established and endorsed by the GoN and FCPF – through the ER-PIN for 12 districts of the Terai Arc Landscape 	<ul style="list-style-type: none"> - More central level, training needed at community level. - National RL developed has some weaknesses such as AD accuracy, degradation calculation and data consistency. 	<ul style="list-style-type: none"> - Include all five carbon pools in the next iteration. - Suitable methodology need to be developed to estimate of emissions from forest degradation - Proposed national RL need to be improved.
27	Demonstration of early system implementation	<ul style="list-style-type: none"> - Recommendations developed to expand to National-level RELs. 		
28	Institutional arrangements and capacities	<ul style="list-style-type: none"> - National RL prepared - TAL RL is compatible with UNFCCC/IPCC. 		



R-Package results

Component 4a: National Forest monitoring System

S. N.	Assessment Criteria	Strengths	Weaknesses	Areas of improvement
29	Demonstration of methodology	<ul style="list-style-type: none"> - Well-documented monitoring approach including remote-sensing and ground-based inventory methods. - DFRS Designated as Central level body. - National system designed. - FRA data could be used for future monitoring (especially verifications). 	<ul style="list-style-type: none"> - Limited central level technical depth. - Few staff trained. - Synchronized systems weak. - Designed systems not tested. - The system is not yet operational 	<ul style="list-style-type: none"> - Share data with other stakeholder. - Release FRA reports of other regions. - Include Tree Outside Forest (TOF) and Private Forest. - Put greater emphasis on capacity building.
30	Use of historical data, and adjustment for national circumstances			
31	Technical feasibility of the methodological approach, and consistency with UNFCCC/IPCC guidance and guidelines			



R-Package results

Subcomponent: 4b. Information System on Multiple Benefits, Other Impacts, Governance, and Safeguards

S. N.	Assessment Criteria	Strengths	Weaknesses	Areas of improvement
32	Demonstration of methodology	- FRA proposes Open Source Data system.	- Lack of field tests for national system.	- The participatory and inclusive community based MMR guidelines need to be developed
33	Use of historical data, and adjustment for national circumstances	- Sub National system piloted and operational. - Within TAL sharing Ok.	- Limited Capacity of DFRS officials. - Limited National level sharing.	- Organize technical trainings to related stakeholders - Provide higher education opportunities to DFRS and other staffs
34	Technical feasibility of the methodological approach, and consistency with UNFCCC/IPCC guidance and guidelines	- National system designed but not tested. - DFRS Designated as Central level body.	- Limited central level technical depth. - Few staff trained. - Synchronized systems weak.	- Develop monitoring system with SMART indicators for Non-Carbon Benefits (NCBs). - Improve inclusion and representation of wider stakeholder. - Sub-national experience need to scale up to National. Recognise rights of forest use, tenure and customary right. Follow bottom up approach and involve ethnic minority, women and forest dependent communities.

