



LIBERIA



REDD Readiness Preparation Arrangements

Presented at Video-conference
on 9th April 2010

The World Bank does not guarantee the accuracy of the data included in the this presentation submitted by Liberia and accepts no responsibility whatsoever for any consequence of their use. The boundaries, colors, denominations, and other information shown on any map in this presentation do not imply on the part of the World Bank any judgment on the legal status of any territory or the endorsement or acceptance of such boundaries.

REDD Partnership

- ▣ National Programme
 - Government of Liberia
 - Civil Society
 - Private sector
 - International NGOs
 - Development partners
- ▣ Direct funding, co-financing and technical assistance from:
 - FCPF
 - UNDP
 - IUCN
 - Fauna & Flora International
 - Conservation International

R-PP – Implementation Arrangements for Comp. 1a

National Readiness Management Arrangements

- Led by Government
- Funding from FCPF + Co-funding from CI and FFI.
- Setting up National Climate Change Steering Committee (NCCSC)
- 4 x Subsidiary Technical Working Groups, incl. REDD
- Recruitment of National Coordinator for REDD TWG
- Broad Carbon Consultative Group

**National Climate Change Steering
Committee**

**National
Coordinator**

**National Climate
Change Secretariat**

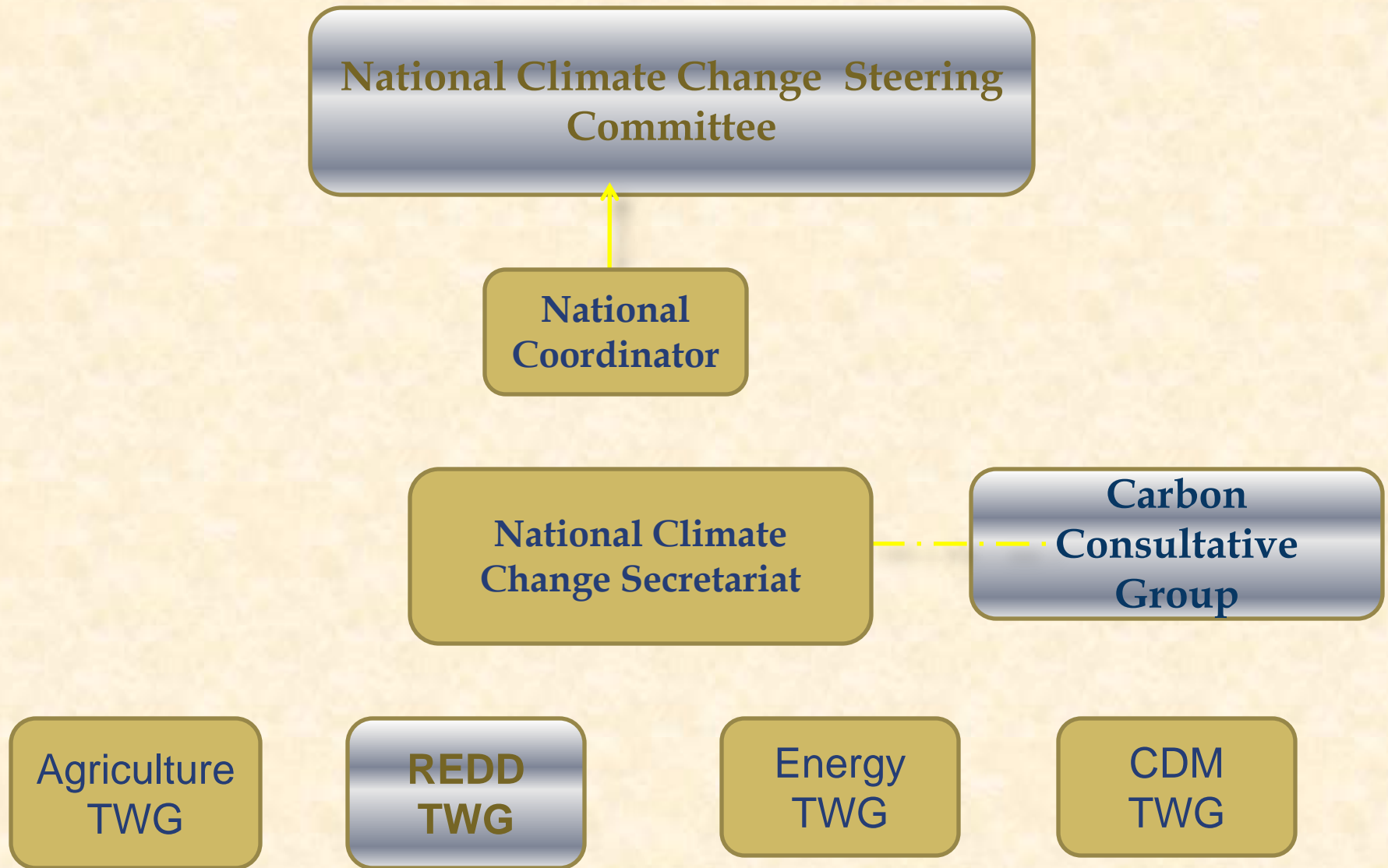
**Carbon
Consultative
Group**

**Agriculture
TWG**

**REDD
TWG**

**Energy
TWG**

**CDM
TWG**



NCCSC

- ▣ **Managing Director (FDA)**
- ▣ **Executive Director (EPA)**
- ▣ **Energy Advisor to the President of Liberia**
- ▣ **Minister (MLME)**
- ▣ **Minister (MoA)**
- ▣ **Minister (MOF)**
- ▣ **Country Manager (FFI)**
- ▣ **Country Director (IUCN)**
- ▣ **Country Director (CI)**
- ▣ **Country Manager (World Bank)**
- ▣ **UN REDD Focal Point (UNDP)**
- ▣ **Civil Society**
- ▣ **Private Sector**
- ▣ **REDD Secretariat (Ex-Officio)**

REDD TWG

Government-led with strong funding & technical role from international partners:

- Chair / co-Chair - Forestry Development Authority / Environment Protection Agency
- Other Gov. members - Office of the President, MoF, MLME, MIA, MoGD, MoAg
- Civil Society – Private sector, national NGOs, youth and womens groups,
- International NGOs - FFI, CI, IUCN, Global Witness, CARE International
- Development Partners - UNDP, USAID, WB

Carbon Consultative Group

Government

- ▣ Office of the President
- ▣ MoF, MLME, MoA, MPEA, MIA
- ▣ MoGD, MICAT, MoE, MoL, MPW
- ▣ FDA, EPA, GC, University of Liberia

Development Partners

- ▣ IUCN, CI/NCRC, FFI
- ▣ UNDP, FAO, UNEP
- ▣ GTZ, WB

Carbon Consultative Group

Private Sector

- ▣ Liberian Timber Association
- ▣ Association of Liberian Loggers
- ▣ Pit-Saw/Lumber Producers, Charcoal Producers
- ▣ Liberian Bar Association
- ▣ Rubber Planters Association
- ▣ Liberia Agriculture Company
- ▣ Firestone
- ▣ Buchanan Renewable
- ▣ Liberia Marketing Association
- ▣ Chamber of Commerce

Carbon Consultative Group

Civil Society

- ▣ Local NGOs
- ▣ Society of Liberian Foresters
- ▣ Labor and Trade Unions
- ▣ National Traditional Council
- ▣ Local communities (e.g. farmers, forest dependent communities)

R-PP – Implementation Arrangements for Comp. 1b

Stakeholder Consultative Outreach

- ▣ Led by task force comprising (IUCN, FFI, SADS)
- ▣ Funding from FCPF + Co-funding from IUCN and FFI
- ▣ Draft community outreach and communication plan includes seven consultative meetings:
 - VPA and the CFDCs platforms (one each).
 - Four regional level meetings
 - National validation meeting
- ▣ Overall, aim to harmonise with VPA and NFP consultation mechanisms

R-PP – comp. 1b, cont

- ▣ **Focus of the Consultation Workshop:**
 - Forestry and livelihood issues
 - Deforestation and forest degradation
 - REDD+ process in Liberia
 - Stakeholder concerns and expectation

- ▣ **Implementing Agency:**
 - FDA
 - C&P Task force of the REDD TWG
 - NGOs operating in respective geographic areas

R-PP – Implementation Arrangements for Comp. 2a

Assessment of Land Use, Forest Policy and Governance

- ▣ Led by FDA with strong external technical support
- ▣ Funding from FCPF for:
 - external technical assistance
 - review workshop

R-PP – comp. 2a, cont

Reviews and Studies

- Existing land use plans, policies & deforestation drivers;
- Assessment of forest land use, policies and governance
- Use of Forest Cover Management Suitability Study (National Forest Management Strategy, 2007) for allocation to commercial forestry and agricultural concessions;
- Design and field procedures of the current forest inventory systems used at forest management unit level in Liberia + applicability to assessment of forest biomass and baseline carbon stocks

R-PP – Implementation Arrangements Comp. 2b

REDD Strategy Options

- ▣ Led by FDA with strong technical support from CI
- ▣ Additional funding from FCPF for external technical assistance if required
- ▣ Approach founded on concept of Low Carbon Economy as a basis for exploring policy options for REDD;

R-PP – Implementation Arrangements for Comp. 2c

REDD Implementation Framework

- ▣ Led by FDA with co-financing and technical support from CI, FFI and IUCN

R-PP – Implementation Arrangements for Comp. 2d

Social and Environmental Impacts

- ▣ Led by EPA with strong technical and financial support from WB.
- ▣ Stakeholder consultation for SESA

R-PP – Implementation Arrangements for Design Work for Comps. 3,4 & 6

- ▣ Reference Scenario
- ▣ Monitoring System
- ▣ Monitoring System for co-benefits
- ▣ Program Monitoring and Evaluation Framework

Implementation:

- ▣ Funding from FCPF with co-financing from CI;
- ▣ Implementation and technical assistance by CI

R-PP – towards completion

- ▣ Assisted closely by the REDD TWG, FDA will lead the coordination and synthesis of outputs under each component;
- ▣ FCPF will fund operational expenses and, if required, technical assistance to synthesize and consolidate the REDD Readiness Preparation
- ▣ Liberia plans to submit for August 2010

Thank You